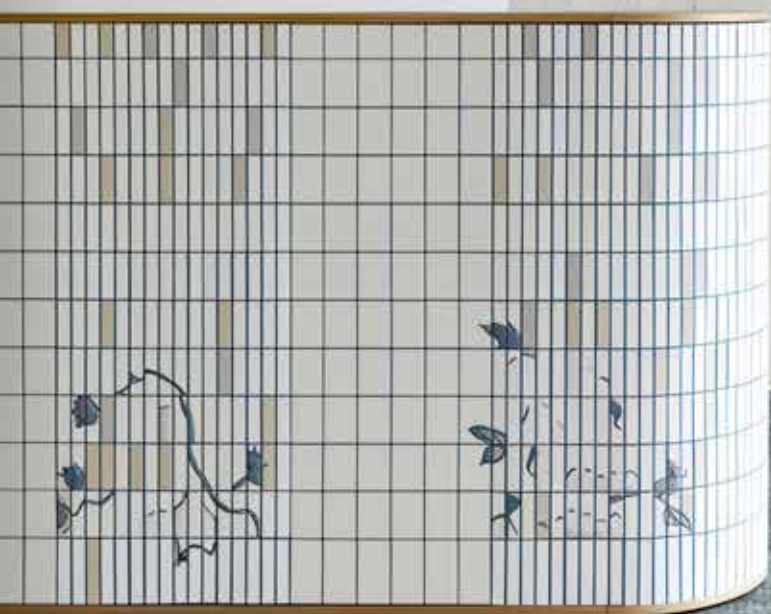


—
BLOQ

creative
carpet tiles

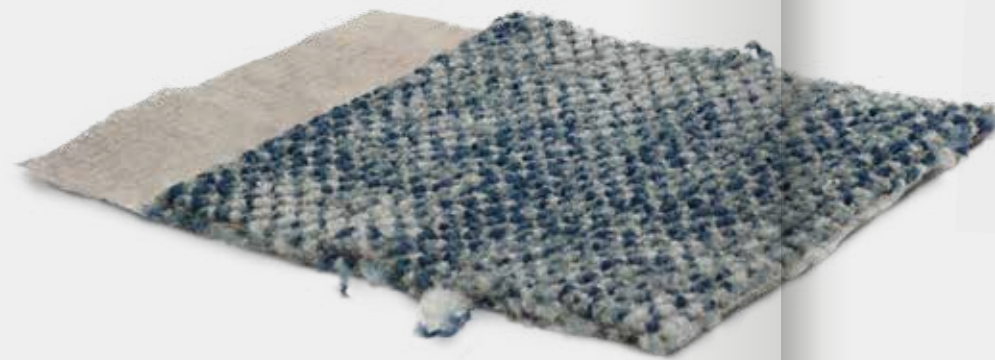


THE RELIEF
SOLACE

Part of The Relief

The Relief Collection is inspired by nature's organic textures and splendid colours. Its intricate materialities served as inspiration for this collection: moss and lichen, earth and sea surfaces, bark and naturally aged concrete.

When you take a closer look at these creations of nature, you can uncover so much beauty. So let's allow nature to inspire us even more.



Lichen

Organic



Tactile

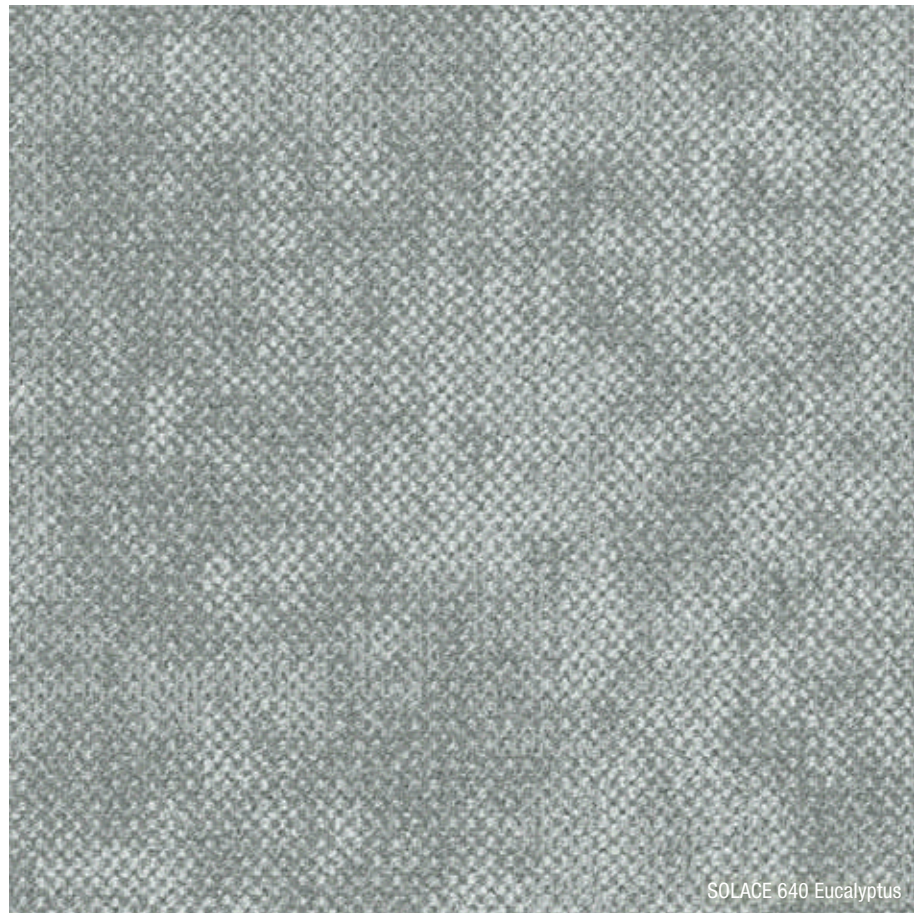


Earthy inspiration



Ice

THE RELIEF
SOLACE



Inspiration
is everywhere

Subtle touch of nature

SOLACE, part of The Relief Collection, reflects both the energy and tranquillity of nature. It captures the intensity and variety of the natural elements, in an irregular pattern that adds a raw, natural look to your spaces.

It brings subtle natural tones to life, reminiscent of a walk through the forest or a hike along the rugged cliffs on the coastline. The effect is like a good walk should be: letting you explore and relax at the same time.



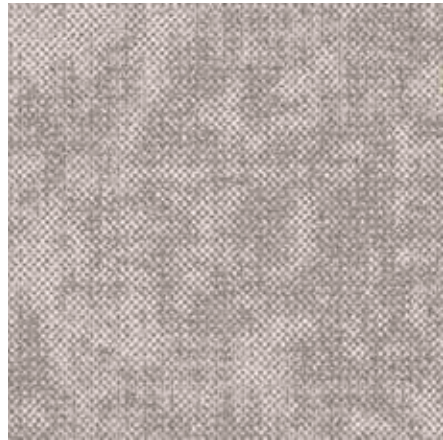
SOLACE 630 Fern



SOLACE 630 Fern

Serene colour range

SOLACE comes in **11 subtle colour tones** straight from nature. Be inspired by the vastness of a mountain face, the calmness of a beige beach, the warmth of rusty metal, ... The serene shades derive their names directly from nature. Our solution dyed yarns are coloured to the core and tufted in a textured runner pattern, for a beautiful loop pile effect that combines amazingly with harsher natural materials such as concrete or steel.



SOLACE 165 OFF WHITE



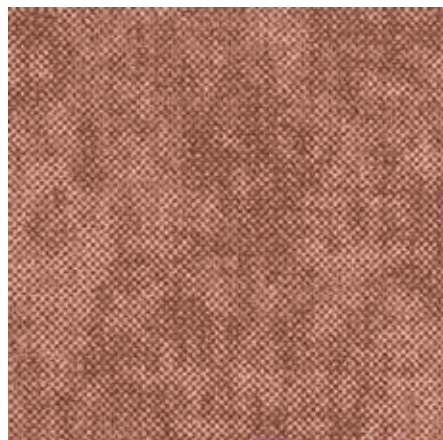
SOLACE 630 FERN



SOLACE 170 LIGHT TAUPE



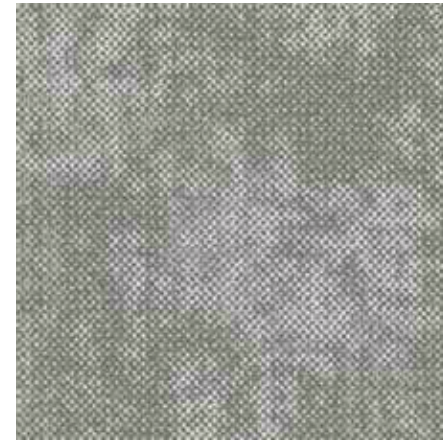
SOLACE 830 DRIFTWOOD



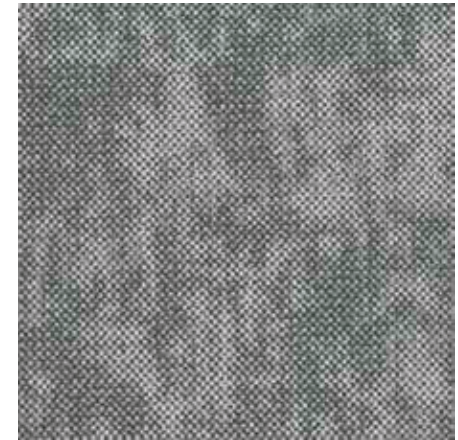
SOLACE 240 INDIAN SUMMER



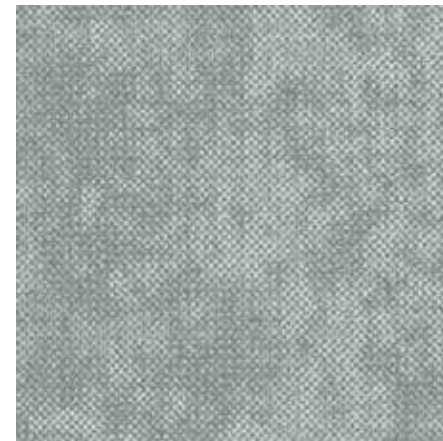
SOLACE 240 Indian Summer



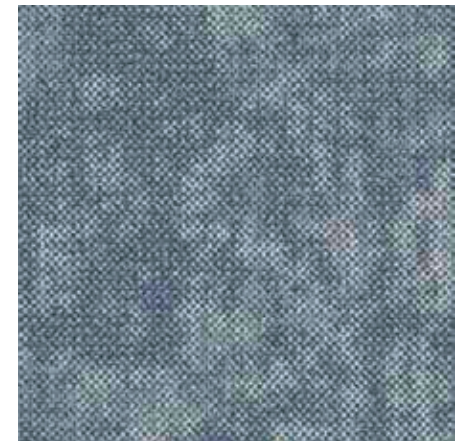
SOLACE 975 PEPPERWHITE



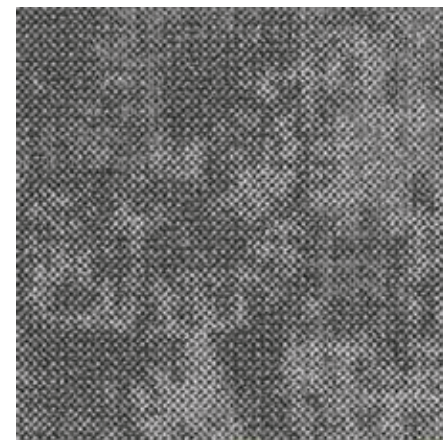
SOLACE 985 NORTHSEA



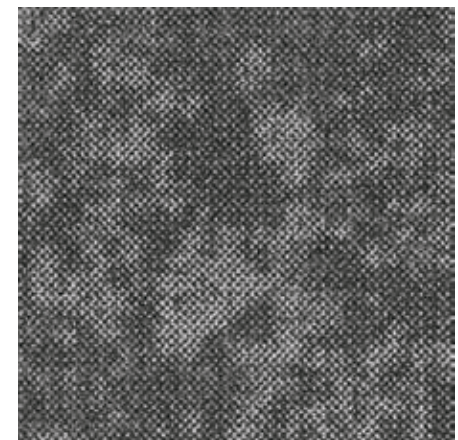
SOLACE 640 EUCALYPTUS



SOLACE 550 SMOKE BLUE



SOLACE 995 CARBON



SOLACE 990 GRANITE



SOLACE 170 Light Taupe



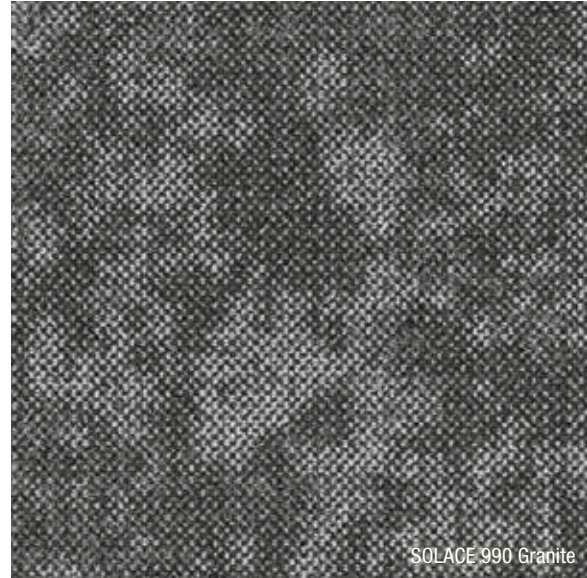
SOLACE 170 Light Taupe

Serenity at the office

The organic design and intricate texture of SOLACE create a sense of calm. In combination with its excellent sound-absorbing properties and wonderful walking comfort, it is the perfect carpet tile for an office environment, allowing you to focus with an energising touch of nature underfoot.



SOLACE 985 Northsea



SOLACE 990 Granite

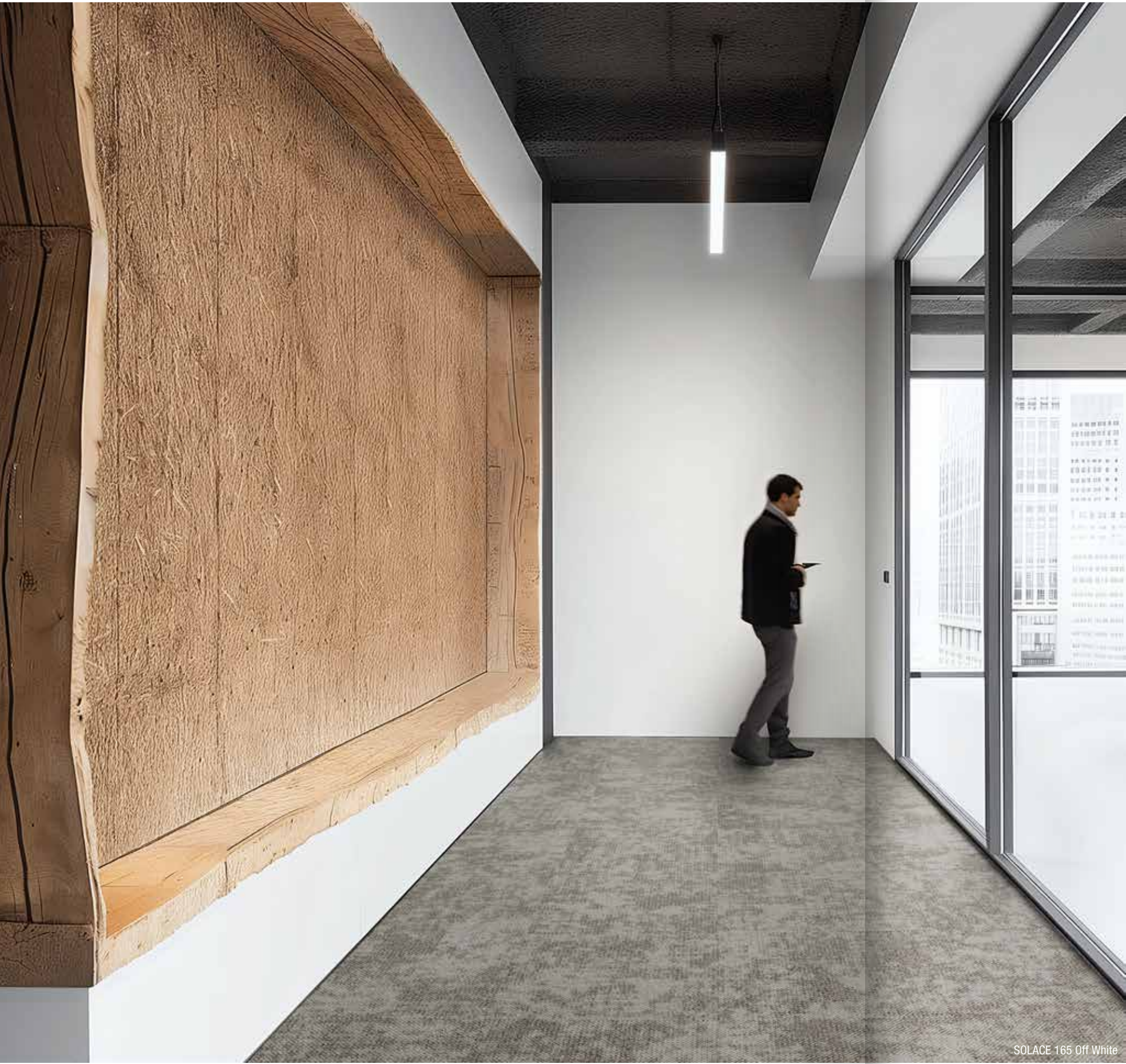


SOLACE 985 Northsea



SOLACE 995 Carbon

*Experience the hues
of nature*



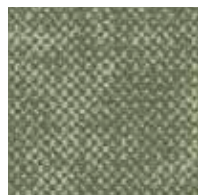
SOLACE 165 Off White



SOLACE 165 Off White

Don't be afraid to mix

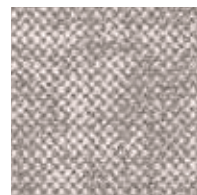
Just as the elements in nature can collide, you can easily combine different shades of SOLACE. Combine complementary hues, such as green Fern with warm Indian Summer, or mimic natural scenes by creating a transition from Off white to the slightly darker Driftwood. This way, you can subtly mark out areas in your space or make the scene look and feel more dynamic.



SOLACE 630 FERN



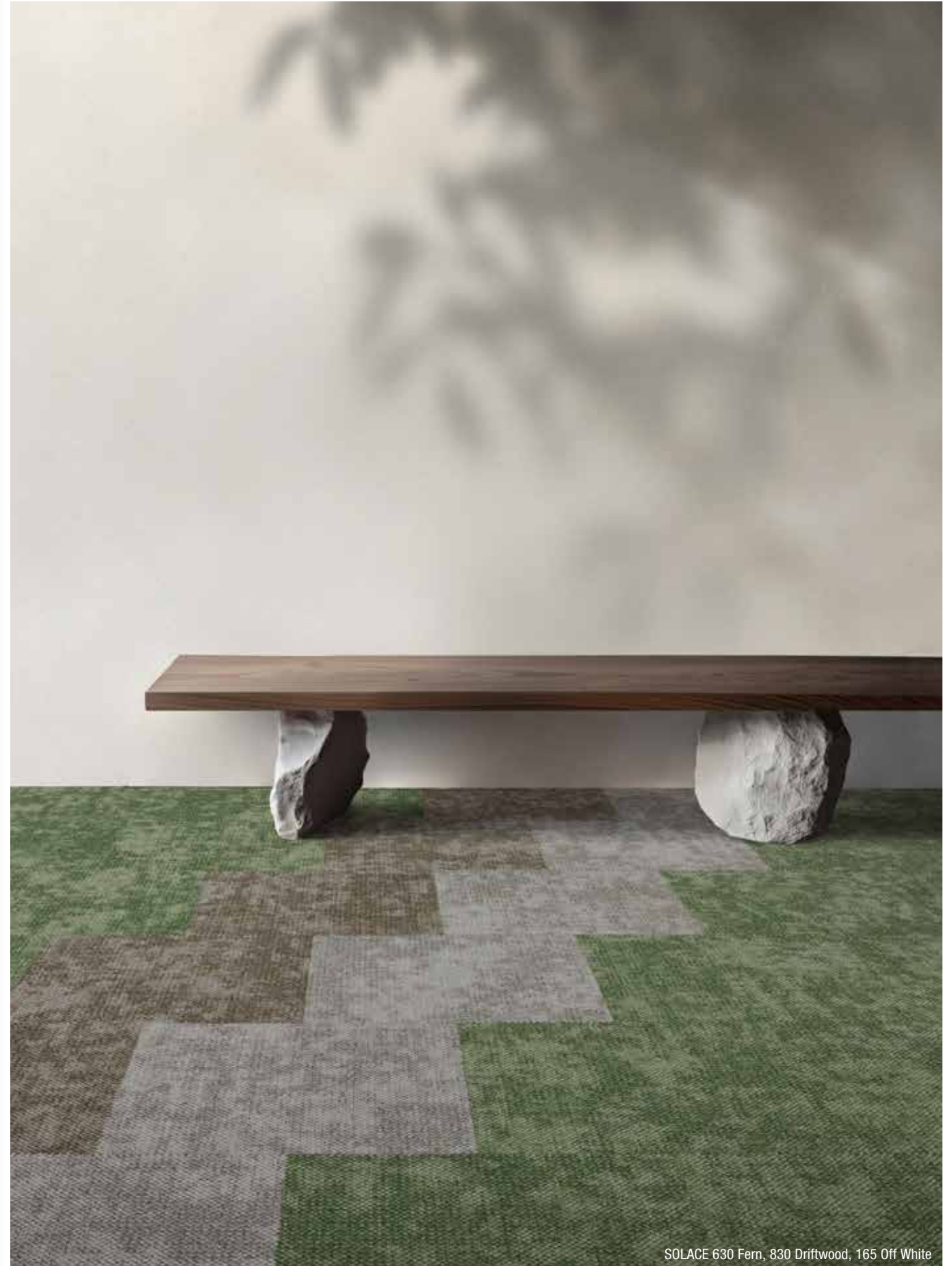
SOLACE 830 DRIFTWOOD



SOLACE 165 OFF WHITE



Our tiles are made with colourfast yarns



SOLACE 630 Fern, 830 Driftwood, 165 Off White



SOLACE 640 Eucalyptus, 165 Off White, 170 Light Taupe

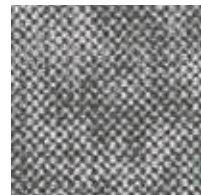
Combine similar shades for a subtle colour transition that exudes balance.



SOLACE 640 EUCALYPTUS

SOLACE 165 OFF WHITE

SOLACE 170 LIGHT TAUPE



SOLACE 985 NORTHSEA



SOLACE 550 SMOKE BLUE

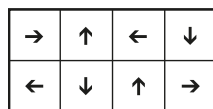


SOLACE 985 Northsea, 550 Smoke Blue

Highlights

NON-DIRECTIONAL POSITIONING

SOLACE carpet tiles are most beautiful when installed non-directional. By placing the tiles in varying directions, you get less repetition in the pattern, giving your SOLACE floor an even more natural look. On the back of each tile, you will find an arrow indicating the pile direction, making non-directional installation easier.



SOLACE 170 Light Taupe, 165 Off White

SOLUTION DYED YARNS

BLOQ uses 100% Polyamide 6 Solution Dyed Nylon from **Aquafil**, the best and leading supplier for carpet manufacturers. Solution dyed means **better colour fastness** and the best results to light and water.



LIGHT REFLECTANCE VALUES

Light Reflectance Value (LRV) is a scale that measures visible and usable light reflected from an illuminated surface. The percentage identifies how much light a colour reflects or absorbs. 0% reflects no visible light, 100% reflects all light.

COLOUR	LRV _{uv}	L
165 Off White	29.49	61.21
170 Light Taupe	22.59	54.65
240 Indian Summer	13.42	43.40
550 Smoke Blue	17.80	49.25
630 Fern	21.64	53.64
640 Eucalyptus	21.53	53.53
830 Driftwood	20.37	52.66
975 Pepperwhite	24.63	56.71
985 Northsea	21.24	53.21
990 Granite	9.48	36.89
995 Carbon	10.41	38.57



SOLACE 830 Driftwood

BLOQ

creative carpet tiles



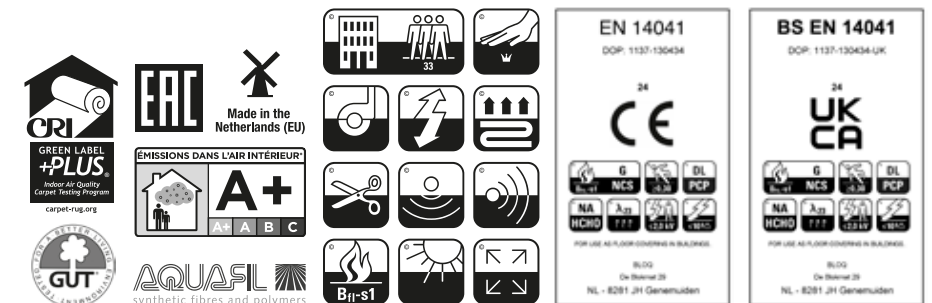
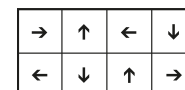
THE RELIEF SOLACE

SPECIFICATIONS

TYPE OF MANUFACTURE	Tufted Patterned Loop Pile 1/10"
ISO 2424	
PILE FIBER COMPOSITION	100% Polyamide 6
ISO 2424	Solution Dyed Nylon made by Aquafil
SECONDARY BACKING	Bitback, Modified Bitumen
ISO 2424	70% Recycled Content
DIMENSION	50 x 50 cm
EN ISO 24342	
PILE WEIGHT	675 g/m ²
ISO 8543	
SURFACE PILE WEIGHT	325 g/m ²
ISO 8543	
TOTAL WEIGHT	4 400 g/m ²
ISO 8543	
TOTAL THICKNESS	6.7 mm
ISO 1765	
PILE HEIGHT	3.2 mm
ISO 1766	
PILE DENSITY	0.100 g/m ³
ISO 8543	
NUMBER OF TUFTS	147 000 /m ²
ISO 1763	
DIMENSIONAL STABILITY	≤ 0.2%
ISO 2551	
NUMBER OF COLOURS	11
PACKAGING	Box: 20 tiles / 5 m ² Pallet: 200 m ²

PERFORMANCE

CLASSIFICATION	33
EN 1307	
LUXURY RATING	LC1
EN 1307	
CASTOR CHAIR RATING	A: Intensive use
EN 985	
FIRE CLASSIFICATION	B _{f1} -s1
EN 13501-1	
IMPACT SOUND INSULATION	ΔL _w : 26 dB
EN ISO 10140-3	
SOUND ABSORPTION	Frequency Hz 125 250 500 1000 2000 4000
EN ISO 354	α _s 0.00 0.05 0.10 0.20 0.35 0.40
NOISE REDUCTION	α _w : 0.20
EN ISO 354	
PERMANENT ANTISTATIC	≤ 2 kV
ISO 6356	
TRANSVERSAL RESISTANCE	≤ 1 X 10 ⁹ Ohm
ISO 10965	
THERMAL RESISTANCE	0.0804 m ² /K/W
ISO 8302	
COLOUR FASTNESS TO LIGHT	≥ 7
EN ISO 105-B02	
COLOUR FASTNESS TO WATER	≥ 4
EN ISO 105-E01	
RUBBING FASTNESS	≥ 4
EN ISO 105-X12	
GUT N° PRODIS	3CE0E3FA



All rights reserved to alter technical specifications.

www.bloq.nl