



# Unique

The Graphic Tile Collection

Premium quality. Guaranteed



[WWW.CONDOR-GROUP.EU](http://WWW.CONDOR-GROUP.EU)



# Unique

The Graphic Tile Collection



Unique 20



Unique 120



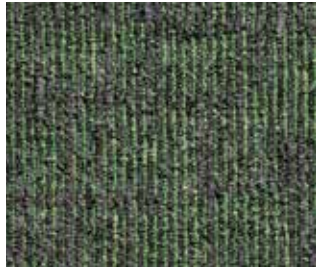
Unique 51



Unique 151



Unique 42



Unique 142



Unique 70



Unique 73



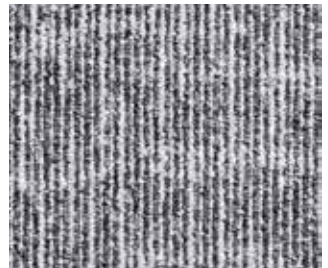
Unique 74



Unique 76



Unique 77



Unique 78



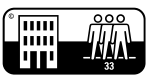
Unique 80



Unique 83



Unique 90





# Unique

## The Graphic Tile Collection

### General specifications

Tuft gauge	1/10 loop pile						ISO 2424
Pilecomposition	100% PA SDN						ISO 2424
Primary Backing	Non Woven						ISO 2424
Secondary backing	Bitumen						ISO 2424
Width	50 x 50 cm		± 0.2%			EN 986	
Pile Density	0,131 gr/cm <sup>3</sup>						ISO 8543
Pile Weight	720 gr/m <sup>2</sup>						ISO 8543
Total weight	4525 gr/m <sup>2</sup>		± 15%			ISO 8543	
Pile height	3 mm						ISO 1765
Total Height	6 mm						ISO 1765
Number of knots	240.881/m <sup>2</sup>		-7.5% . +10%			ISO 1763	
Fire Classification	Bfl-S1						EN 13501-I
Use Area	Heavy project use (33)						EN 1307
Sound Absorption Hz	125	250	500	1000	2000	4000	ISO 11654
	0,00	0,00	0,05	0,15	0,25	0,20	
Evaluated sound absorptions grade αW	0,15 αW						ISO 11654
Sound Insulation	Ca. 28 dB						ISO 10140
Thermal resistance	Ca. 0.07 M <sup>2</sup> KW						ISO 8302
Light fastness	≥ 5						105-B02
Wearebility	≥ 4						105-X12
Water fastness	≥ 4						105-E01
Electrostatic charging	<2 kV						ISO 6356
Luxury class	LC3						EN 1307
Pictures	<a href="http://www.condorcontract.com">www.condorcontract.com</a>						

### Floorsymbols



### Certificates



2018 Condor Carpets, Euroweg 3, 8061 SB Hasselt  
 EN 1307 **DOP:** C-003RBU323 **Reaction to fire:** Bfl-s1 **Slip resistance:** DS  
 EN 14041:2004  
 Resilient floor covering to be used within a building

Condor Carpets bv

Euroweg 3, 8061 SB | P.O. Box 21, 8060 AA | Hasselt, The Netherlands  
 T (+31) 38 477 89 11 | F (+31) 38 477 89 22 | [info@condorcarpets.nl](mailto:info@condorcarpets.nl)



[WWW.CONDOR-GROUP.EU](http://WWW.CONDOR-GROUP.EU)

