

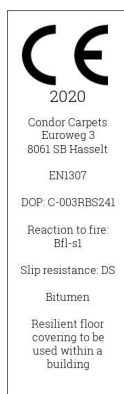
Sparkle Tiles

| | | | |
|-------------------------------|----------------------------------|-------------|-----------|
| Tuft gauge | 1/10 loop pile | | ISO 2424 |
| Pilecomposition | 100% PA SDN | | ISO 2424 |
| Primary Backing | Non Woven | | ISO 2424 |
| Secondary backing | Bitumen | | ISO 2424 |
| Width | 50 x 50 cm | ± 0.2% | EN 984 |
| Pile Weight | 510 gr/m ² | | ISO 8543 |
| Total weight | Bitumen : 3940 gr/m ² | ± 15% | ISO 8543 |
| Pile height | 3.5 mm | ± 2 mm | ISO 1766 |
| Total Height | Bitumen : 5.5 mm | | ISO 1765 |
| Number of knots | 173.360/m ² | -7.5% .+10% | ISO 1763 |
| Fire Classification | Bfl-S1 | EN 13501-1 | |
| Use Area | Heavy project use (33) | | EN 1307 |
| Sound Insulation | Ca. 25 dB | | ISO 10140 |
| Thermal resistance | Ca. 0,07 M ² KW | | ISO 8302 |
| Light fastness | ≥ 5 | | 105-B02 |
| Wearebility | ≥ 4 | | 105-X12 |
| Water fastness | ≥ 4 | | 105-E01 |
| Electrostatic charging | <2 kV | | ISO 6356 |
| Luxury class | LC2 | | EN 1307 |
| Pictures | www.condorcontract.com | | |

Floorsymbols

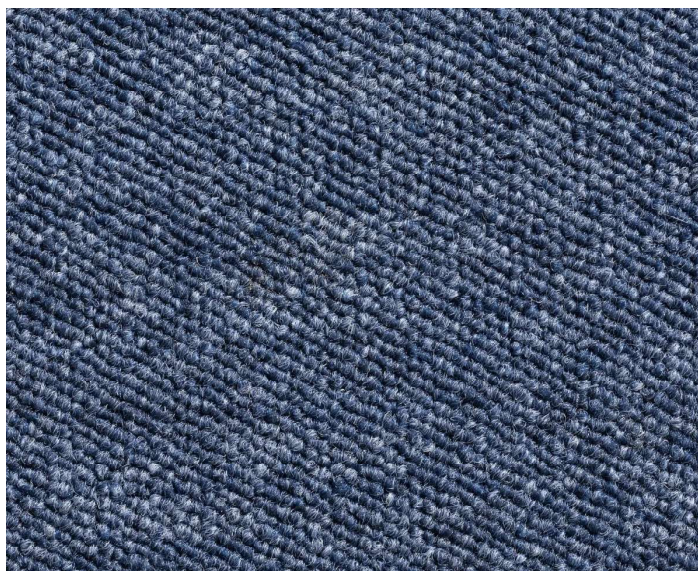


Certificates



Contract
Sparkle

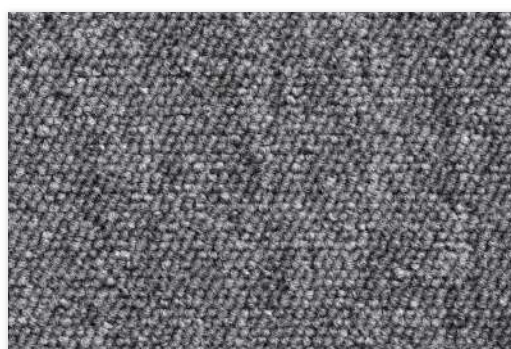
DISCOVER THE COLOURS »



Choose your style



71



72



77



78



83



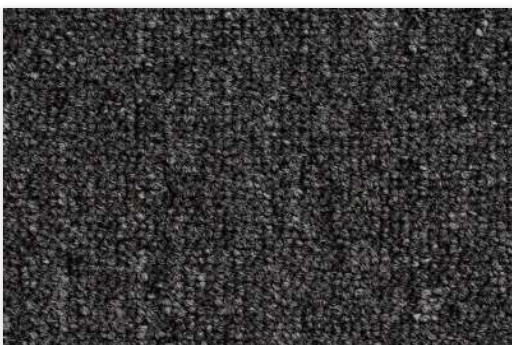
84



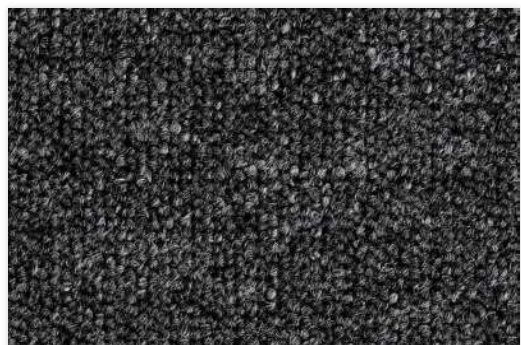
90



93



278



378