

LOOK BOOK

TOUCAN-T
carpet manufacture

TOUCAN-T
carpet manufacture

Hochwertige Teppichböden für den anspruchsvollen Objektbereich und Schönes Wohnen sind seit über einem Viertel Jahrhundert unsere Leidenschaft.

Das LOOK BOOK – eine Anleihe aus der Modeszene – zeigt unsere Teppichwelten in faszinierenden Raumin szenierungen. Unser Spektrum umfasst hochwertige Teppichböden für den anspruchsvollen Objekt- und gehobenen Wohnbereich, für designorientierte Hotels, spektakuläre Messestände und einladende Ladenlokale.

Mit der aktuellen Kollektion erschließt TOUCAN-T völlig neue Farbspektren für eine raumprägende Bodenkultur. Kombiniert mit neuer, glänzender Faseroptik entstehen innovative Oberflächen höchster Brillanz zur Akzentuierung Ihrer Innenräume oder auch zeitlos elegante Teppiche, die sich perfekt in Ihre Architektur eingliedern.

Die Produkte von TOUCAN-T erfüllen seit jeher höchste Fertigungsstandards sowie höchste Anforderungen in Sachen Gesundheit und Umwelt. In der Hightech-Produktion des Unternehmens werden ausschließlich sorgfältig ausgewählte Markenfasern verarbeitet. Zertifizierungen gemäß CE und DIBt sind obligatorisch. Die Einhaltung niedrigster Emissionsgrenzen wird zusätzlich regelmäßig durch die GUT und den TÜV zertifiziert. Damit werden zugleich die Anforderungen der Prüfsiegel „Blauer Engel“ und „Green Label Plus“ erfüllt. Alle TOUCAN-T-Produkte sind prädestiniert für den Einsatz in Gebäuden, die nach LEED oder DGNB zertifiziert sind.

Lieferzeiten	Alle Qualitäten sind als Rollenware ständig lagernd und sofort verfügbar. Bei größeren Objekten koordinieren wir die Lieferung gemäß Ihren Anforderungen.
SL-Fliesen	SL-Fliesen werden ab 500 m ² objektbezogen produziert und innerhalb weniger Wochen geliefert.
Sonderfarben	Unser Color-Design-Studio unterstützt Sie bei der Entwicklung und Umsetzung Ihrer objektbezogenen Entwürfe in Material, Form und Farbe. Sonderfarben sind bereits ab 200 m ² möglich.
Musterservice	Ihre ausgewählten Teppichmuster erhalten Sie über unseren Musterservice innerhalb von 24 Stunden. Mustergrößen: 10 x 25 cm, 40 x 50 cm.
Beratung	Unsere Objektberater sind jederzeit für Sie da und bei Bedarf sofort bei Ihnen vor Ort.


High-quality carpets for sophisticated professional spaces and beautiful living environments have been our passion for more than a quarter of a century.

The LOOK BOOK – borrowed from the fashion scene – presents our world of carpets in fascinating spatial installations. Our spectrum encompasses high-quality carpets for sophisticated buildings and inspired living-spaces, for design oriented hotels, spectacular trade fair booths and inviting stores.

TOUCAN-T's current collection gives you access to completely new color ranges offering a distinctive carpet culture. Our new fibers have a gentle optical sheen that combines to create innovative surfaces with a luster accentuating your interiors, or timelessly elegant carpets that harmonize perfectly with your architecture.

TOUCAN-T's products have always fulfilled and continue to fulfill the highest manufacturing, health and safety and environmental standards. We only use branded fibers in our company's high-tech production facility. And of course we're certified in accordance with CE and the DIBt (German Institute for Construction Engineering). Compliance with the lowest possible levels of emission is also regularly certified by the European Authority for Ecological Carpet Manufacturing (GUT) and the Technical Inspection Authority (TÜV). This means that we also fulfill the requirements for the "Blauer Engel" (Blue Angel) and "Green Label Plus" seals of approval. All of TOUCAN-T's products are ideal for use in buildings that are certified in accordance with LEED or DGNB (German National Authority for Sustainable Building).

Delivery times	<i>All qualities are on continuous stock and immediately available in broadloom. For larger projects we coordinate the delivery according to your requests.</i>
SL tiles	<i>SL tiles are produced from 500 square metres and more in a project oriented manner and can be supplied within only a few weeks.</i>
Special colours	<i>Our Colour Design Studio will support you during the development and conversion of your project-related ideas in material, form and colour. Special colours are available from 200 square metres.</i>
Sample services	<i>You will receive your selected carpet samples from our sample service within a few days. Sample sizes: 10 x 25 cm or 40 x 50 cm.</i>
Consultation	<i>Our project consultants are at your disposal at any time and if required with you on site.</i>



LOOK BOOK



CUT

Astrum	26
Chip	56
Factum	32
Felt	76
Forum	48
Gala	40
Loft	72
Maxime	16
Orbit	46
Real One	62
Trench	36
Unisono	68
Velvet Classic	22
Xerra	94

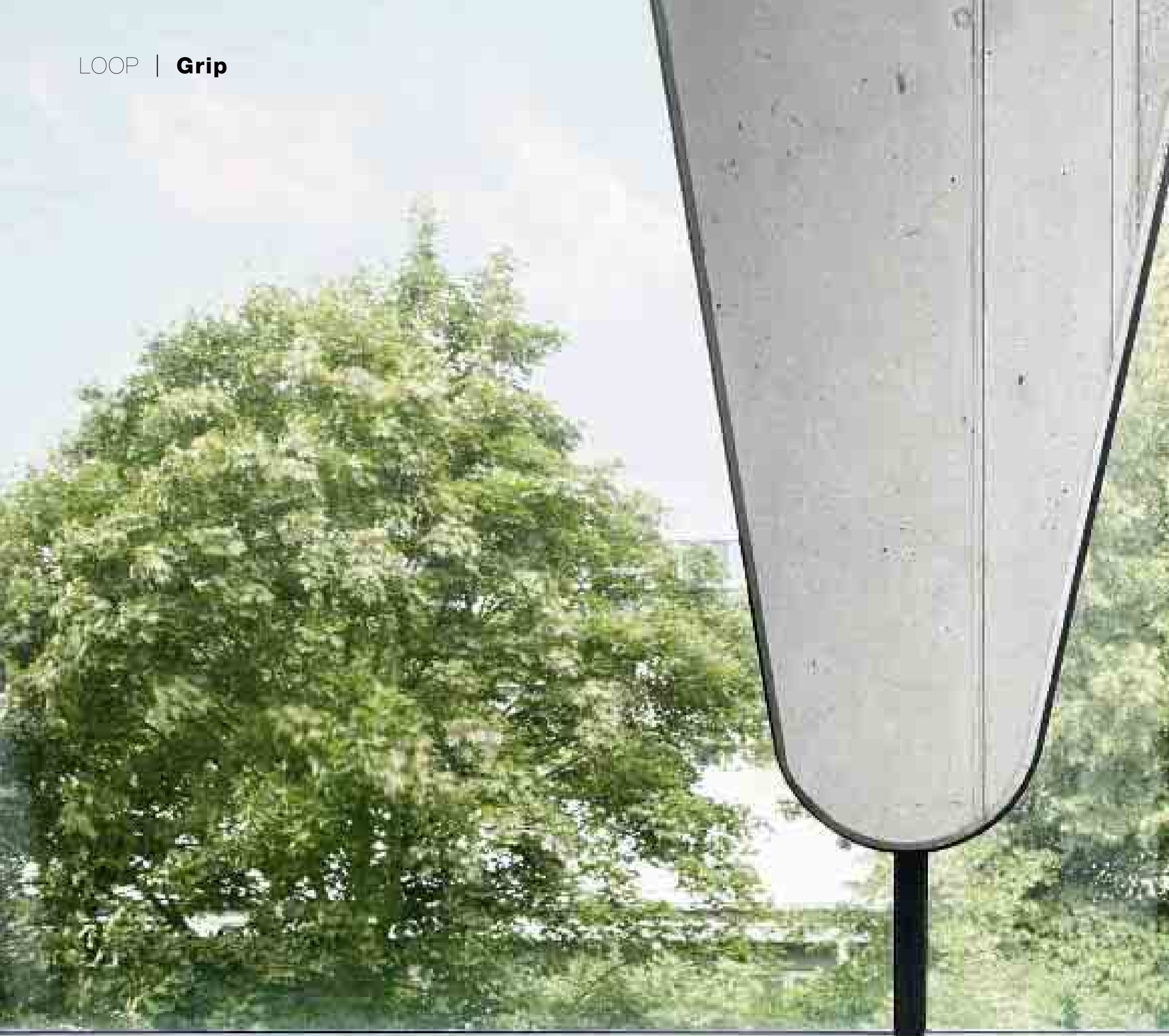
LOOP

Aeras	10
Grip	6
Channel	58
Concept One	80
Concept Two	90
ECO Concept	102
ECO Solo	66
ECO Stream	102
EcoWeb	86
Globular	96
Gloss	30
Highloop	84
Quadro Loop	14
Stream	100
Track	52

A-Z

Aeras	10
Astrum	26
Channel	58
Chip	56
Concept One	80
Concept Two	90
ECO Concept	102
ECO Solo	66
ECO Stream	102
EcoWeb	86
Factum	32
Felt	76
Forum	48
Gala	40
Globular	96
Gloss	30
Grip	6
Highloop	84
Loft	72
Maxime	16
Orbit	46
Quadro Loop	14
Real One	62
Stream	100
Track	52
Trench	36
Unisono	68
Velvet Classic	22
Xerra	94

T-SONIC	104
----------------	-----

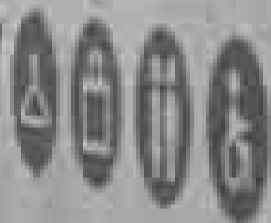


M Raum für Entwicklung

O Café

Forum des Austauschs

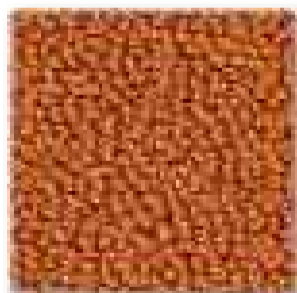
Information und Empfang



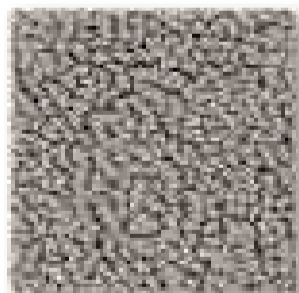


Strapazierwert 32 - normal (intensiv) | **Komfortwert** LC3 hoch | **Herstellungsart** getuftet | **Verwendungsbereich** Stuhlrolle, Treppe | **Material der Nutzschicht** 100% PA Alto® | **Poleinsatzgewicht** ca. 950 g/m² | **Brandverhalten** Cfl-s1
Wear criteria 32 - normal (intensive) | **Comfort criteria** LC3 high | **Method of Production** tufted | **Application** Chair castor, stairs | **Pile material** 100 % PA Alto® | **Pile weight** approx. 950 g/m² | **Fire behaviour** Cfl-s1

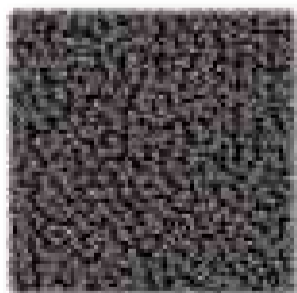
Alle TOUCAN-T Qualitäten erfüllen die Anforderungen für LEED und DGNB zertifizierte Gebäude.
All TOUCAN-T products fulfill the requirements for LEED and DGNB certified buildings.



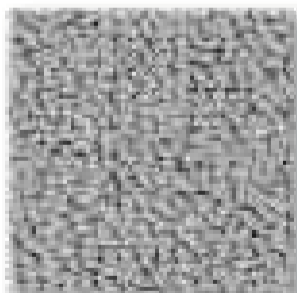
7651



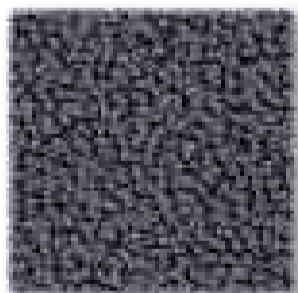
7653



7654



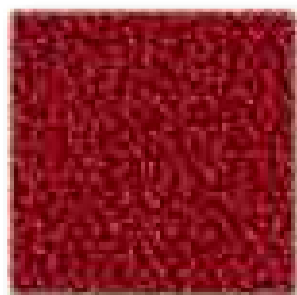
7659



7658



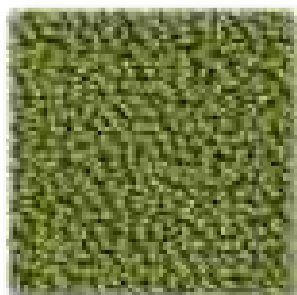
7660



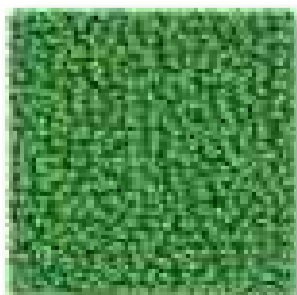
7650



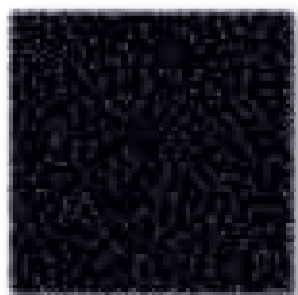
7652



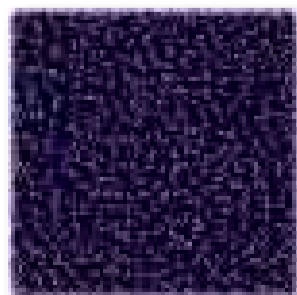
7655



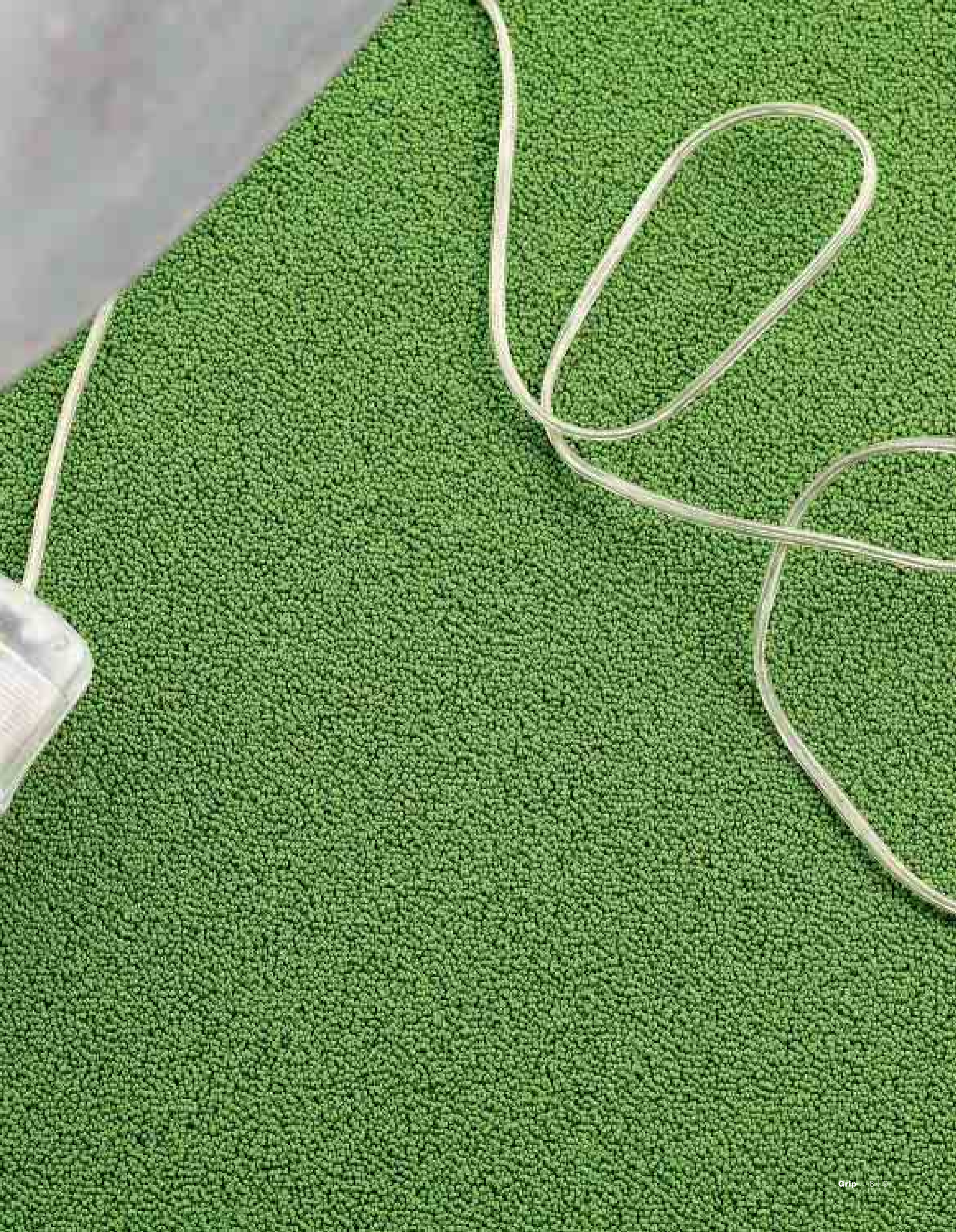
7656



7657



7661







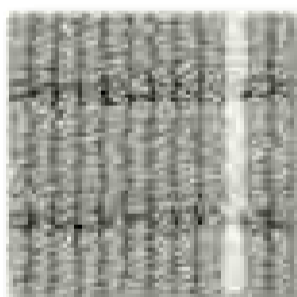


Strapazierwert 33 - stark (extrem) | **Komfortwert** LC2 gut | **Herstellungsart** getuftet | **Verwendungsbereich** Stuhlrolle | **Material der Nutzschicht** 100 % PA Antron® | **Poleinsatzgewicht** ca. 930 g/m² | **Brandverhalten** Cfl-s1
Wear criteria 33 - heavy (extreme) | **Comfort criteria** LC2 good | **Method of Production** tufted | **Application** Chair castor | **Pile material** 100 % PA Antron® | **Pile weight** approx. 930 g/m² | **Fire behaviour** Cfl-s1

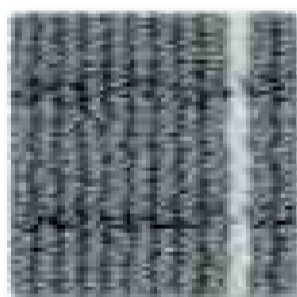
Alle TOUCAN-T Qualitäten erfüllen die Anforderungen für LEED und DGNB zertifizierte Gebäude.
All TOUCAN-T products fulfill the requirements for LEED and DGNB certified buildings.



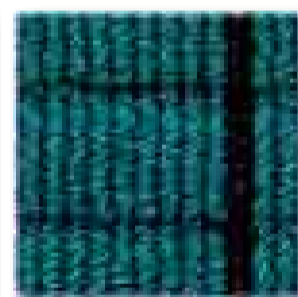
7513



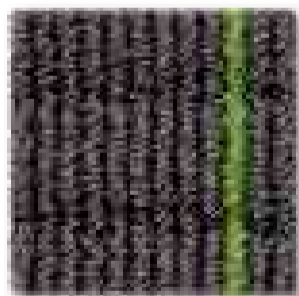
7503



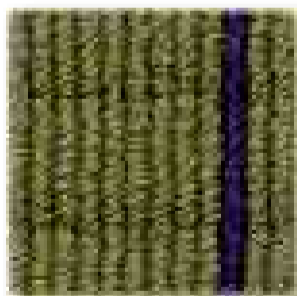
7502



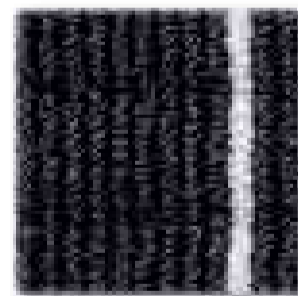
7516



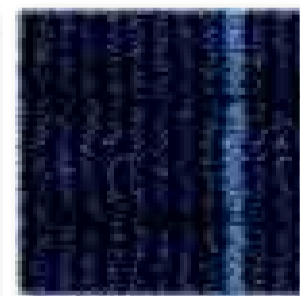
7515



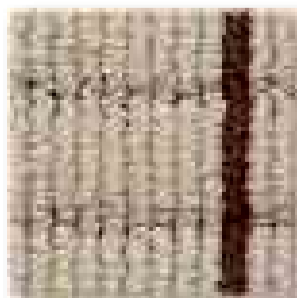
7506



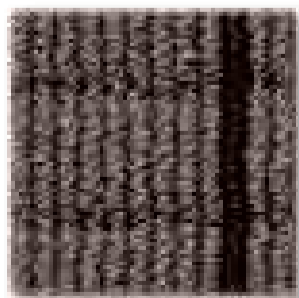
7500



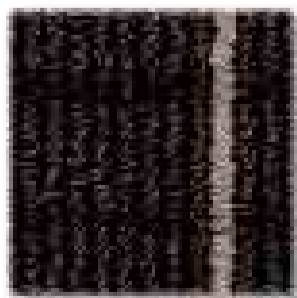
7510



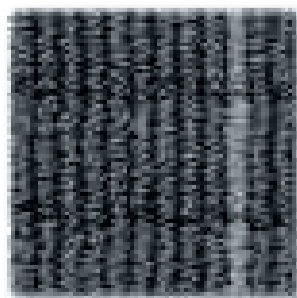
7504



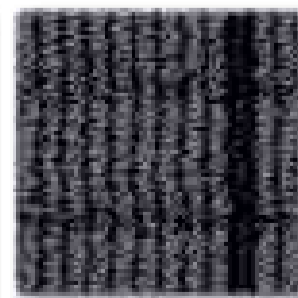
7514



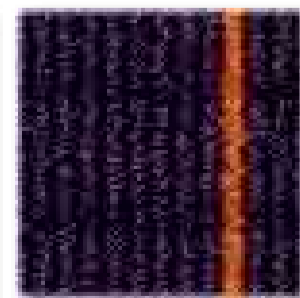
7505



7501



7517



7511







Strapazierwert 33 - stark (extrem) | **Komfortwert** LC2 gut | **Herstellungsart** getuftet | **Verwendungsbereich** Stuhlrolle, Treppe | **Material der Nutzschicht** 100 % PA Alto® | **Poleinsatzgewicht** ca. 780 g/m² | **Brandverhalten** Cfl-s1
Wear criteria 33 - heavy (extreme) | **Comfort criteria** LC2 good | **Method of Production** tufted | **Application** Chair castor, stairs | **Pile material** 100 % PA Alto® | **Pile weight** approx. 780 g/m² | **Fire behaviour** Cfl-s1

Alle TOUCAN-T Qualitäten erfüllen die Anforderungen für LEED und DGNB zertifizierte Gebäude.
All TOUCAN-T products fulfill the requirements for LEED and DGNB certified buildings.







CUT | Maxime



Strapazierwert 33 - stark (extrem) | **Komfortwert** LC5 prestige | **Herstellungsart** getuftet | **Verwendungsbereich** Stuhlrolle | **Material der Nutzschicht** 100 % PA | **Poleinsatzgewicht** ca. 1.850 g/m² | **Brandverhalten** Cfl-s1
Wear criteria 33 - heavy (extreme) | **Comfort criteria** LC5 prestige | **Method of Production** tufted | **Application** Chair castor | **Pile material** 100 % PA | **Pile weight** approx. 1.850 g/m² | **Fire behaviour** Cfl-s1

Alle TOUCAN-T Qualitäten erfüllen die Anforderungen für LEED und DGNB zertifizierte Gebäude.
All TOUCAN-T products fulfill the requirements for LEED and DGNB certified buildings.



6855



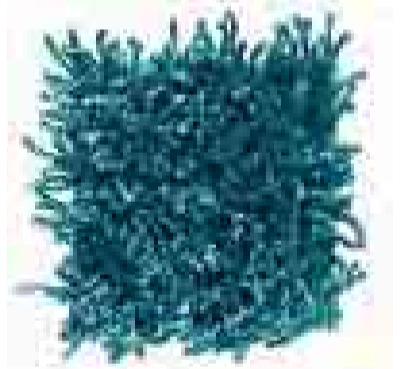
6856



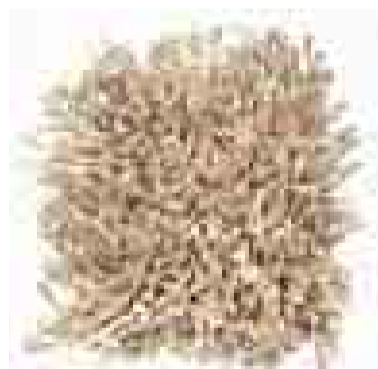
6850



6851



6852



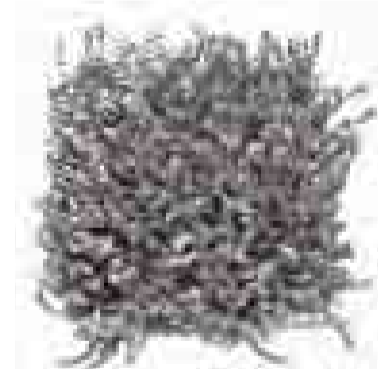
6858



6860



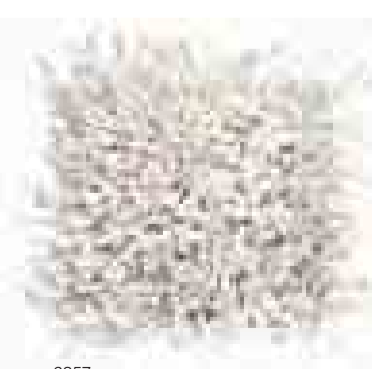
6864



6863



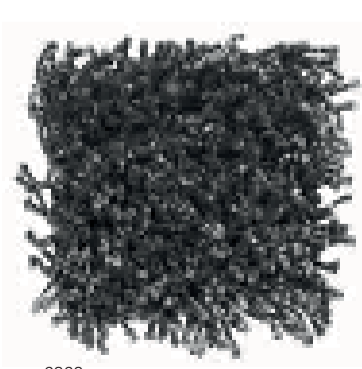
6853



6857



6859



6862



6861



6854



NEWSCAF

EBORN

UNICATIN

ITHOUR

R P P E T S A R

B Y C O M M M

G W V E L L W

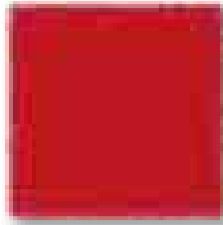
C L I E N T S

CUT | **Velvet Classic**

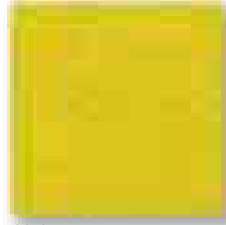




CUT | Velvet Classic



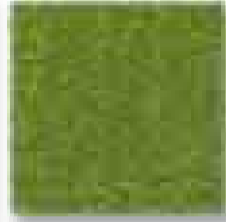
6201



6216



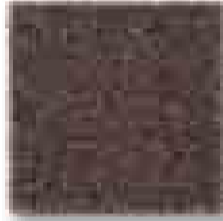
6217



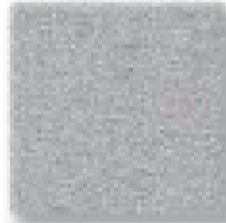
6207



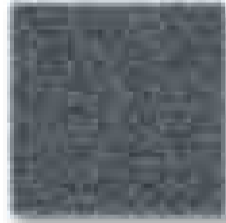
6210



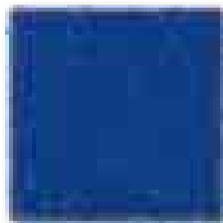
6209



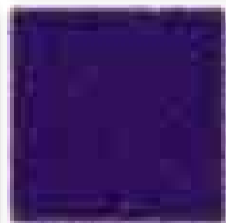
6212



6213



6203



6218



Strapazierwert 32 - normal (intensiv) | **Komfortwert** LC3 hoch | **Herstellungsart** getuftet | **Verwendungsbereich** Stuhlrolle, Treppe | **Material der Nutzschicht** 100 % PA | **Poleinsatzgewicht** ca. 750 g/m² | **Brandverhalten** Cfl-s1
Wear criteria 32 - normal (intensive) | **Comfort criteria** LC3 high | **Method of Production** tufted | **Application** Chair castor, stairs | **Pile material** 100 % PA | **Pile weight** approx. 750 g/m² | **Fire behaviour** Cfl-s1

Alle TOUCAN-T Qualitäten erfüllen die Anforderungen für LEED und DGNB zertifizierte Gebäude.
All TOUCAN-T products fulfill the requirements for LEED and DGNB certified buildings.



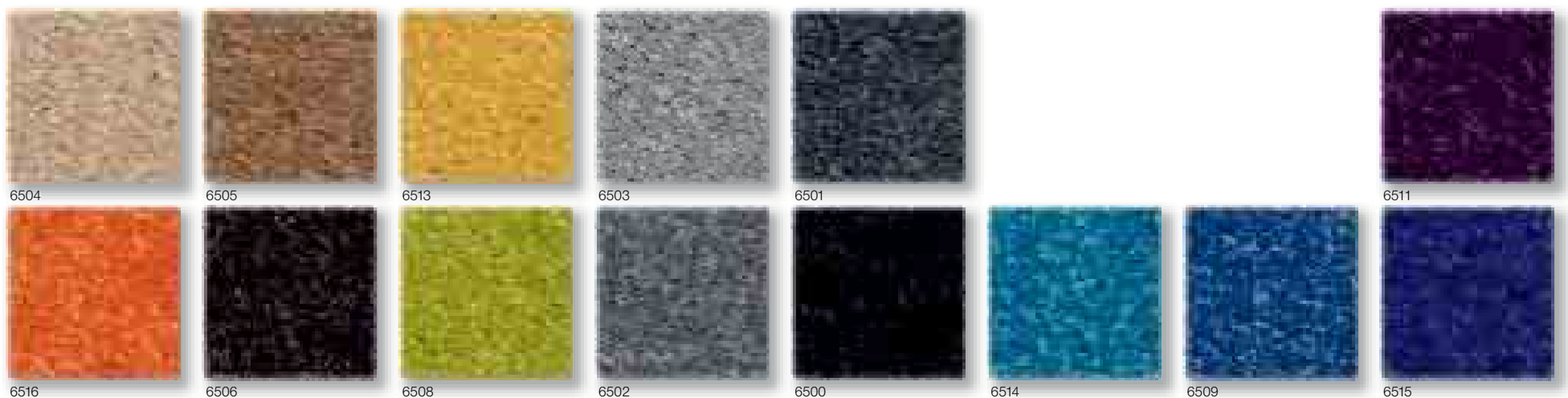






Strapazierwert 32 - normal (intensiv) | **Komfortwert** LC3 hoch | **Herstellungsart** getuftet | **Verwendungsbereich** Stuhlrolle, Treppe | **Material der Nutzschicht** 100 % PA Alto® | **Poleinsatzgewicht** ca. 1.000 g/m² | **Brandverhalten** Cfl-s1
Wear criteria 32 - normal (intensive) | **Comfort criteria** LC3 high | **Method of Production** tufted | **Application** Chair castor, stairs | **Pile material** 100 % PA Alto® | **Pile weight** approx. 1.000 g/m² | **Fire behaviour** Cfl-s1

Alle TOUCAN-T Qualitäten erfüllen die Anforderungen für LEED und DGNB zertifizierte Gebäude.
All TOUCAN-T products fulfill the requirements for LEED and DGNB certified buildings.







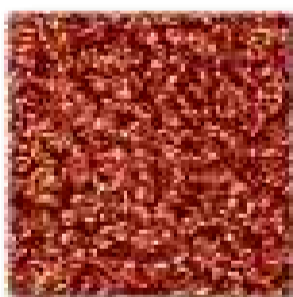


Strapazierwert 32 - normal (intensiv) | **Komfortwert** LC3 hoch | **Herstellungstyp** getuftet | **Verwendungsbereich** Stuhlrolle, Treppe | **Material der Nutzschicht** 100 % PA Alto® | **Poleinsatzgewicht** ca. 920 g/m² | **Brandverhalten** Cfl-s1
Wear criteria 32 - normal (intensive) | **Comfort criteria** LC3 high | **Method of Production** tufted | **Application** Chair castor, stairs | **Pile material** 100 % PA Alto® | **Pile weight** approx. 920 g/m² | **Fire behaviour** Cfl-s1

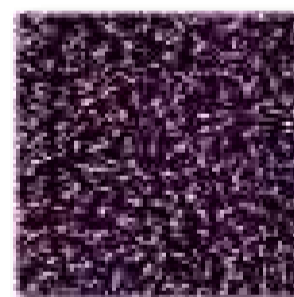
Alle TOUCAN-T Qualitäten erfüllen die Anforderungen für LEED und DGNB zertifizierte Gebäude.
 All TOUCAN-T products fulfill the requirements for LEED and Dgnb certified buildings.



7900



7901



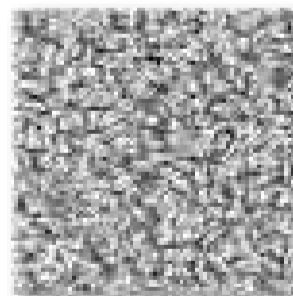
7913



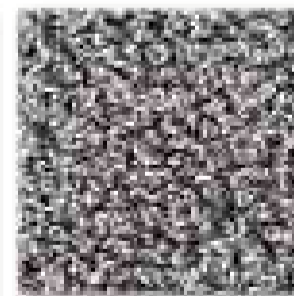
7912



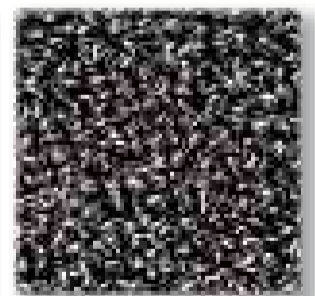
7902



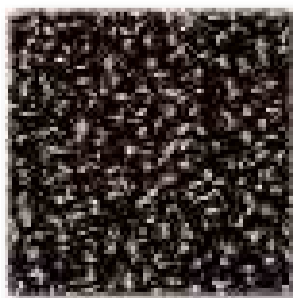
7911



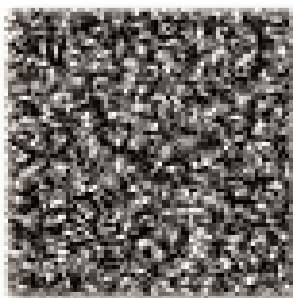
7910



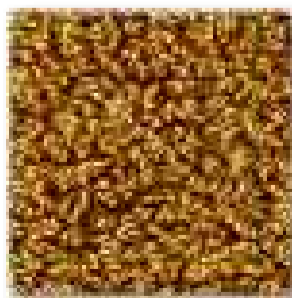
7909



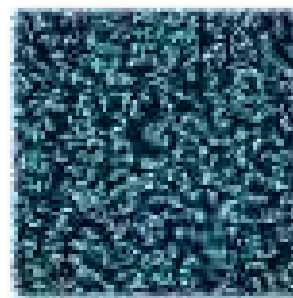
7904



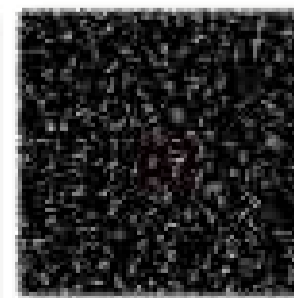
7903



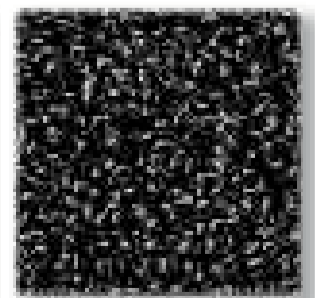
7905



7906



7907



7908







Strapazierwert 32 - normal (intensiv) | **Komfortwert** LC2 gut | **Herstellungsart** getuftet | **Verwendungsbereich** Stuhlrolle, Treppe | **Material der Nutzschicht** 100 % PA Antron® | **Poleinsatzgewicht** ca. 900 g/m² | **Brandverhalten** Cfl-s1
Wear criteria 32 - normal (intensive) | **Comfort criteria** LC2 good | **Method of Production** tufted | **Application** Chair castor, stairs | **Pile material** 100 % PA Antron® | **Pile weight** approx. 900 g/m² | **Fire behaviour** Cfl-s1

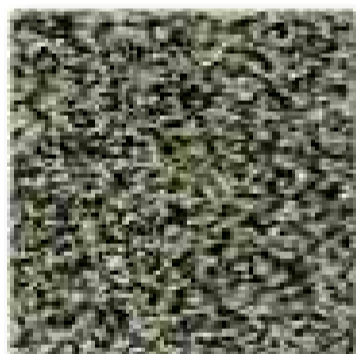
Alle TOUCAN-T Qualitäten erfüllen die Anforderungen für LEED und DGNB zertifizierte Gebäude.
All TOUCAN-T products fulfill the requirements for LEED and DGNB certified buildings.



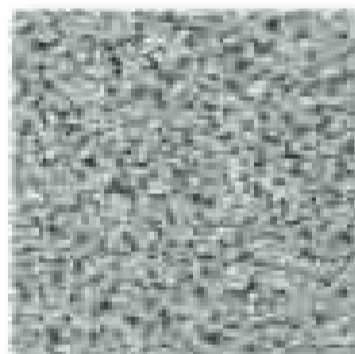
6613



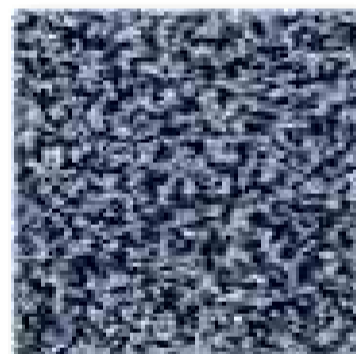
6614



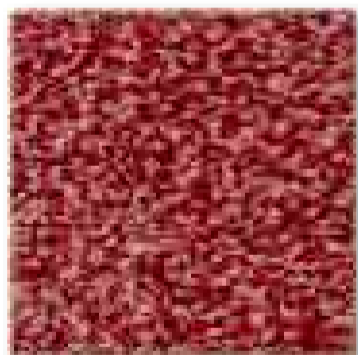
6608



6603



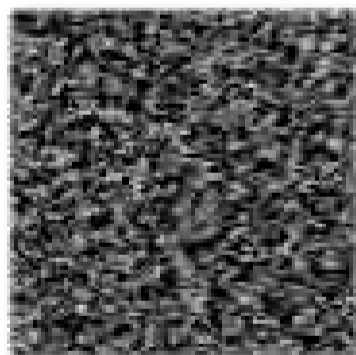
6610



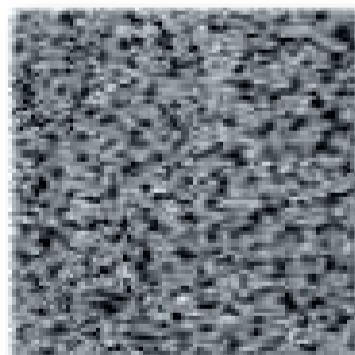
6612



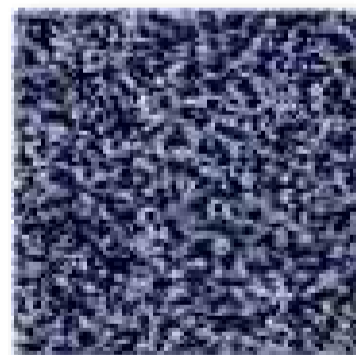
6605



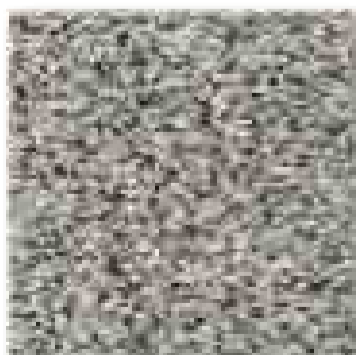
6606



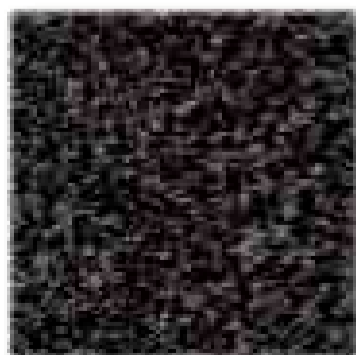
6602



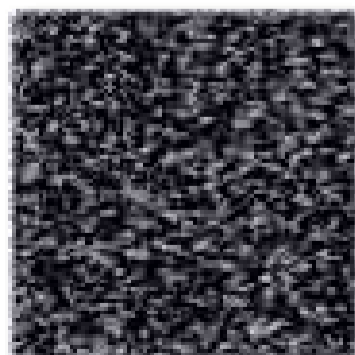
6611



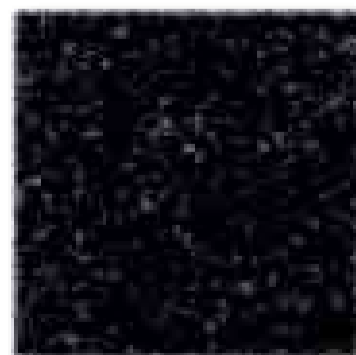
6604



6615



6601



6616







CUT | Trench

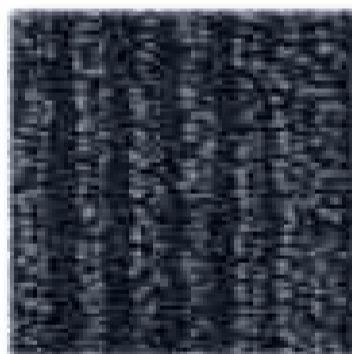


Strapazierwert 32 - normal (intensiv) | **Komfortwert** LC3 hoch | **Herstellungsart** getuftet | **Verwendungsbereich** Stuhlrolle, Treppe | **Material der Nutzschicht** 100 % PA | **Poleinsatzgewicht** ca. 970 g/m² | **Brandverhalten** Cfl-s1
Wear criteria 32 - normal (intensive) | **Comfort criteria** LC3 high | **Method of Production** tufted | **Application** Chair castor, stairs | **Pile material** 100 % PA | **Pile weight** approx. 970 g/m² | **Fire behaviour** Cfl-s1

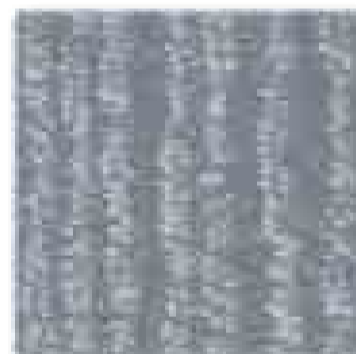
Alle TOUCAN-T Qualitäten erfüllen die Anforderungen für LEED und DGNB zertifizierte Gebäude.
All TOUCAN-T products fulfill the requirements for LEED and DGNB certified buildings.



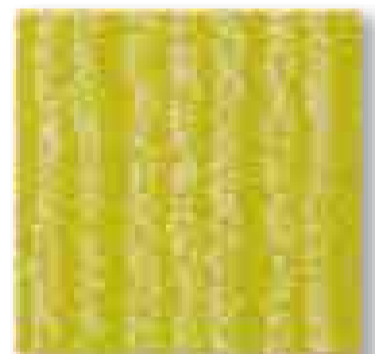
6761



6751



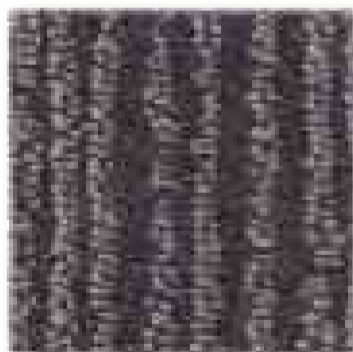
6753



6764



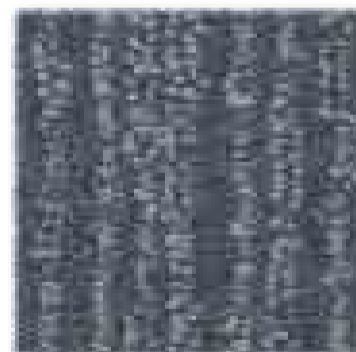
6759



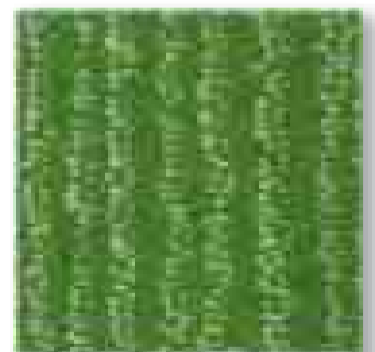
6760



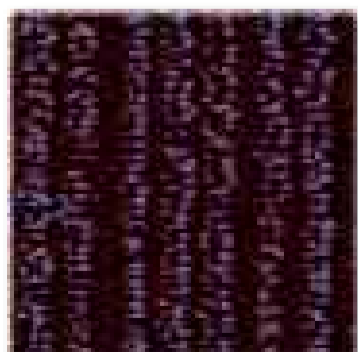
6750



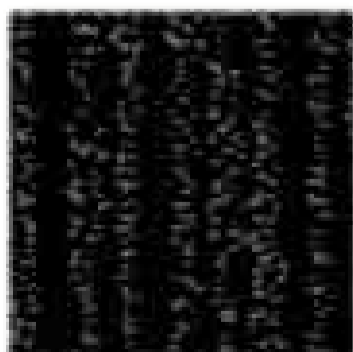
6752



6763



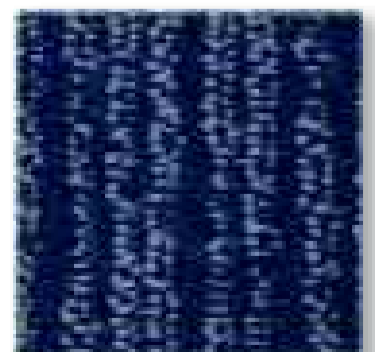
6762



6756



6755



6758



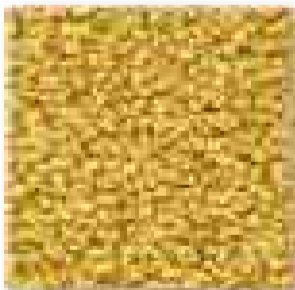




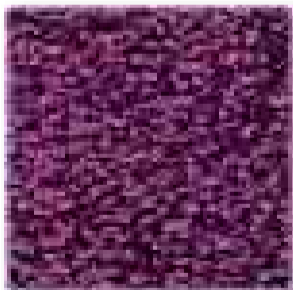


Strapazierwert 32 - normal (intensiv) | **Komfortwert** LC4 luxuriös | **Herstellungsart** getuftet | **Verwendungsbereich** Stuhlrolle, Treppe | **Material der Nutzschicht** 100 % PA Antron® | **Poleinsatzgewicht** ca. 1.150 g/m² | **Brandverhalten** Cfl-s1
Wear criteria 32 - normal (intensive) | **Comfort criteria** LC4 luxury | **Method of Production** tufted | **Application** Chair castor, stairs | **Pile material** 100 % PA Antron® | **Pile weight** approx. 1.150 g/m² | **Fire behaviour** Cfl-s1

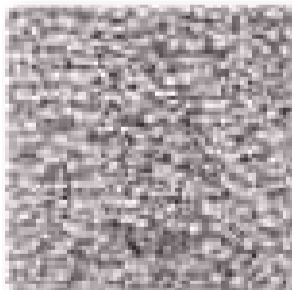
Alle TOUCAN-T Qualitäten erfüllen die Anforderungen für LEED und DGNB zertifizierte Gebäude.
All TOUCAN-T products fulfill the requirements for LEED and DGNB certified buildings.



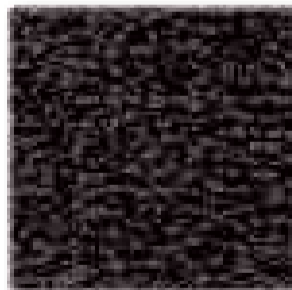
6909



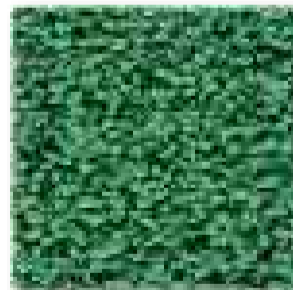
6912



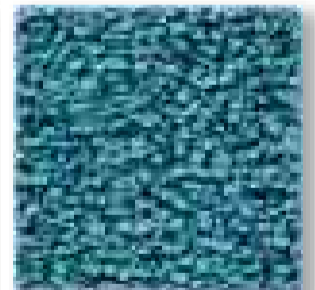
6907



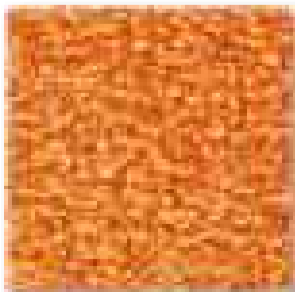
6905



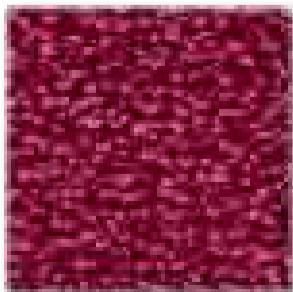
6914



6913



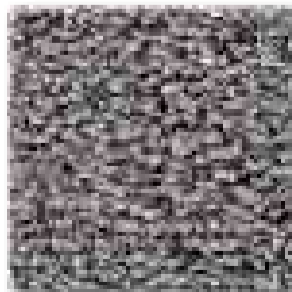
6910



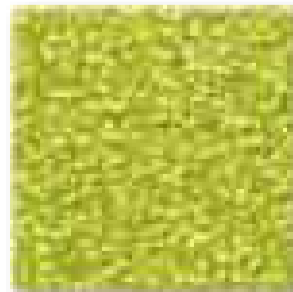
6911



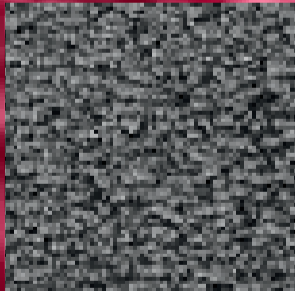
6908



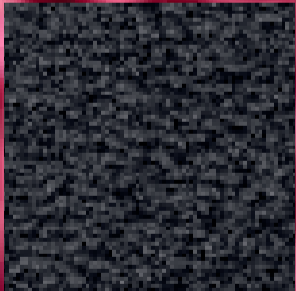
6906



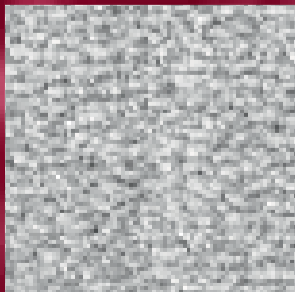
6915



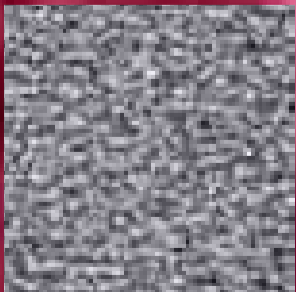
6903



6904



6901



6902

COLOUR MEETS **BLACK**

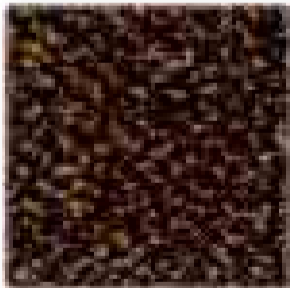
BLACK MEETS COLOUR



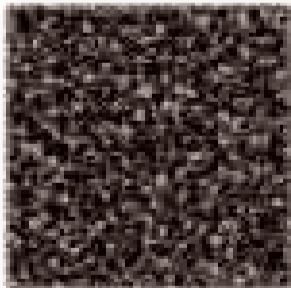


Strapazierwert 32 - normal (intensiv) | **Komfortwert** LC2 gut | **Herstellungsart** getuftet | **Verwendungsbereich** Stuhlrolle, Treppe | **Material der Nutzschicht** 100 % PA Alto® | **Poleinsatzgewicht** ca. 710 g/m² | **Brandverhalten** Cfl-s1
Wear criteria 32 - normal (intensive) | **Comfort criteria** LC2 good | **Method of Production** tufted | **Application** Chair castor, stairs | **Pile material** 100 % PA Alto® | **Pile weight** approx. 710 g/m² | **Fire behaviour** Cfl-s1

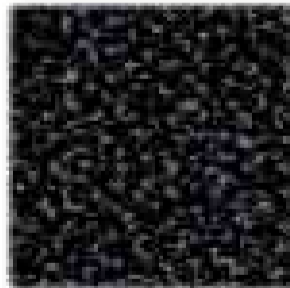
Alle TOUCAN-T Qualitäten erfüllen die Anforderungen für LEED und DGNB zertifizierte Gebäude.
All TOUCAN-T products fulfill the requirements for LEED and DGNB certified buildings.



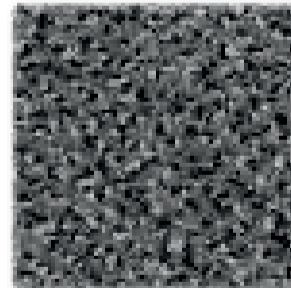
6807



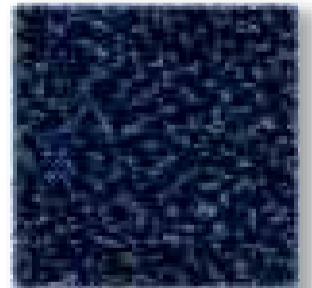
6806



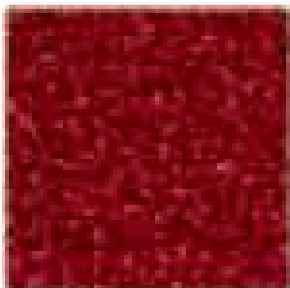
6809



6810



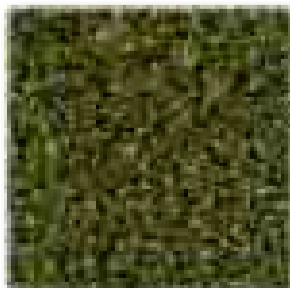
6802



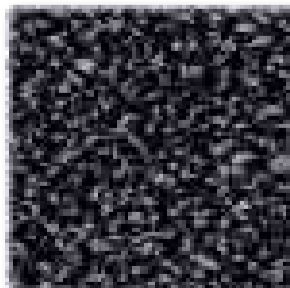
6804



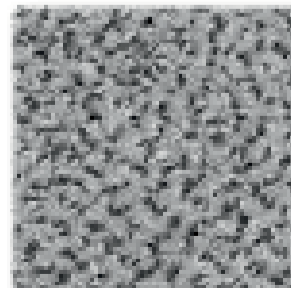
6805



6801



6808



6811



6803

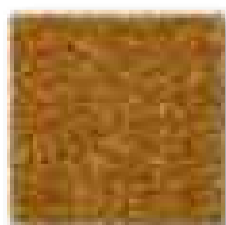




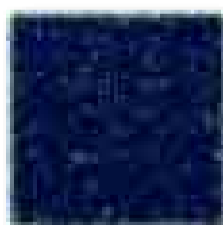


Strapazierwert 32 - normal (intensiv) | **Komfortwert** LC3 hoch | **Herstellungsart** getuftet | **Verwendungsbereich** Stuhlrolle, Treppe | **Material der Nutzschicht** 100 % PA Antron® | **Poleinsatzgewicht** ca. 950 g/m² | **Brandverhalten** Cfl-s1
Wear criteria 32 - normal (intensive) | **Comfort criteria** LC3 high | **Method of Production** tufted | **Application** Chair castor, stairs | **Pile material** 100 % PA Antron® | **Pile weight** approx. 950 g/m² | **Fire behaviour** Cfl-s1

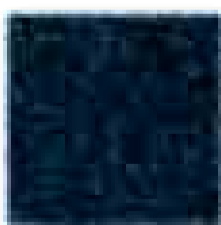
Alle TOUCAN-T Qualitäten erfüllen die Anforderungen für LEED und DGNB zertifizierte Gebäude.
All TOUCAN-T products fulfill the requirements for LEED and DGNB certified buildings.



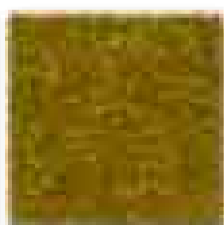
6666



6668



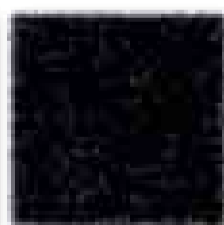
6669



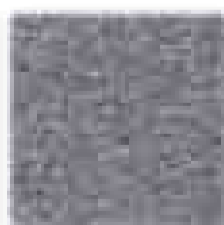
6671



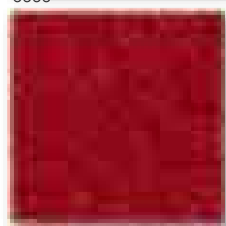
6656



6650



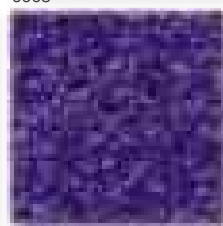
6652



6664



6663



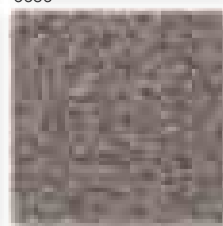
6667



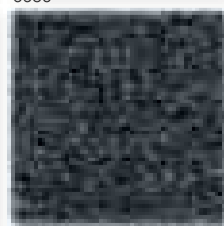
6670



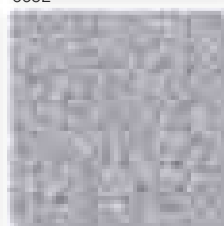
6654



6657

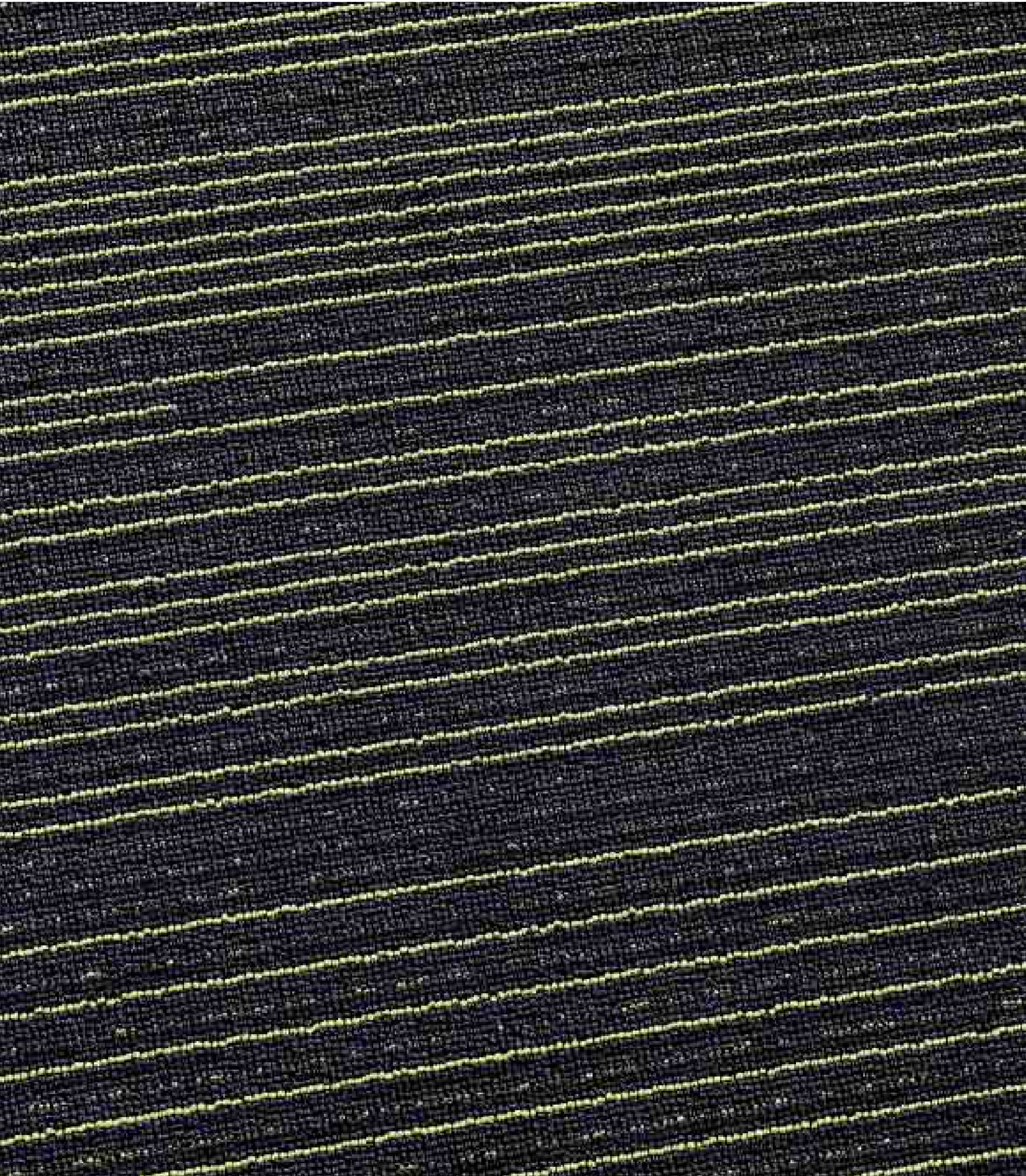


6651

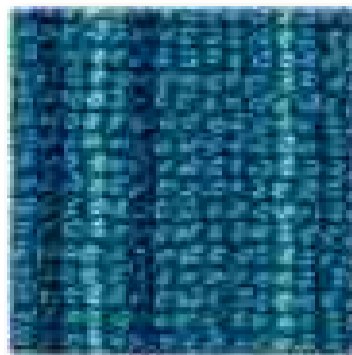


6653

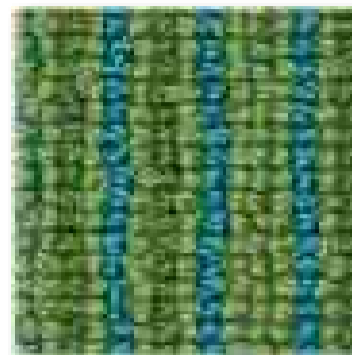




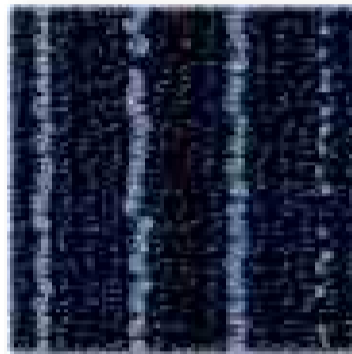




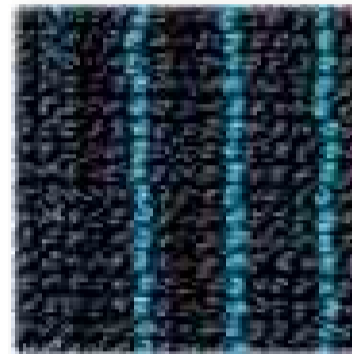
7159



7161



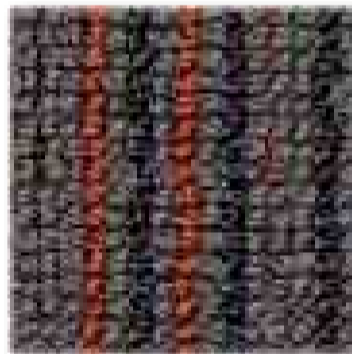
7151



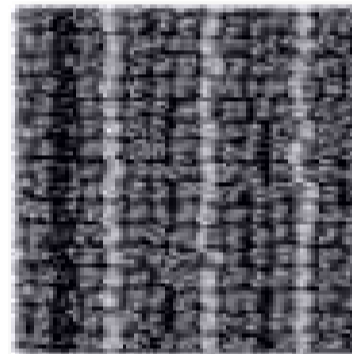
7158



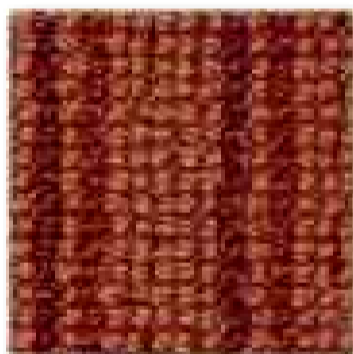
7154



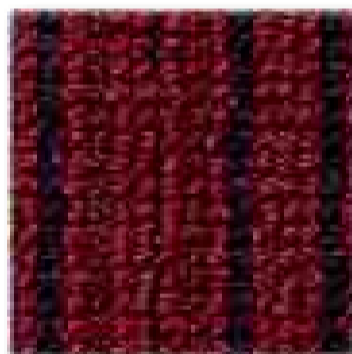
7162



7155



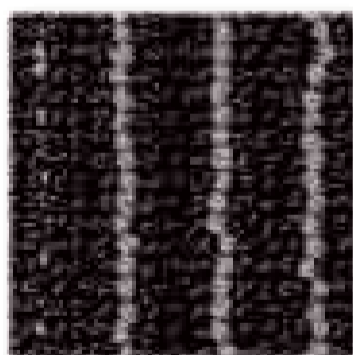
7164



7150



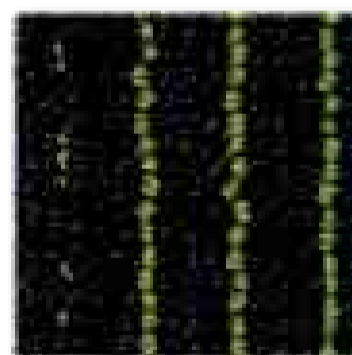
7156



7153



7157



7160

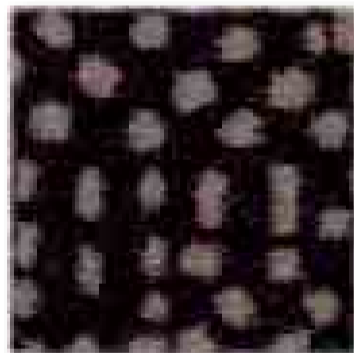


Strapazierwert 33 - Stark (extrem) | **Komfortwert** LC2 gut | **Herstellungsart** getuftet | **Verwendungsbereich** Stuhlrolle, Treppe | **Material der Nutzschicht** 100 % PA Antron® | **Poleinsatzgewicht** ca. 960 g/m² | **Brandverhalten** Cfl-s1
Wear criteria 33 - heavy (extreme) | **Comfort criteria** LC2 good | **Method of Production** tufted | **Application** Chair castor, stairs | **Pile material** 100 % PA Antron® | **Pile weight** approx. 960 g/m² | **Fire behaviour** Cfl-s1

Alle TOUCAN-T Qualitäten erfüllen die Anforderungen für LEED und DGNB zertifizierte Gebäude.
 All TOUCAN-T products fulfill the requirements for LEED and DGNB certified buildings.



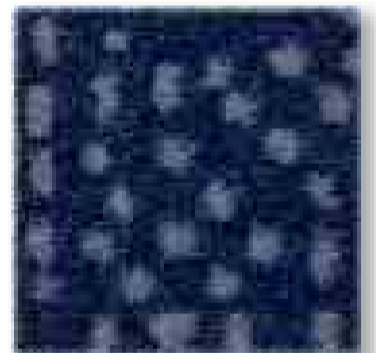




6156



6154



6151

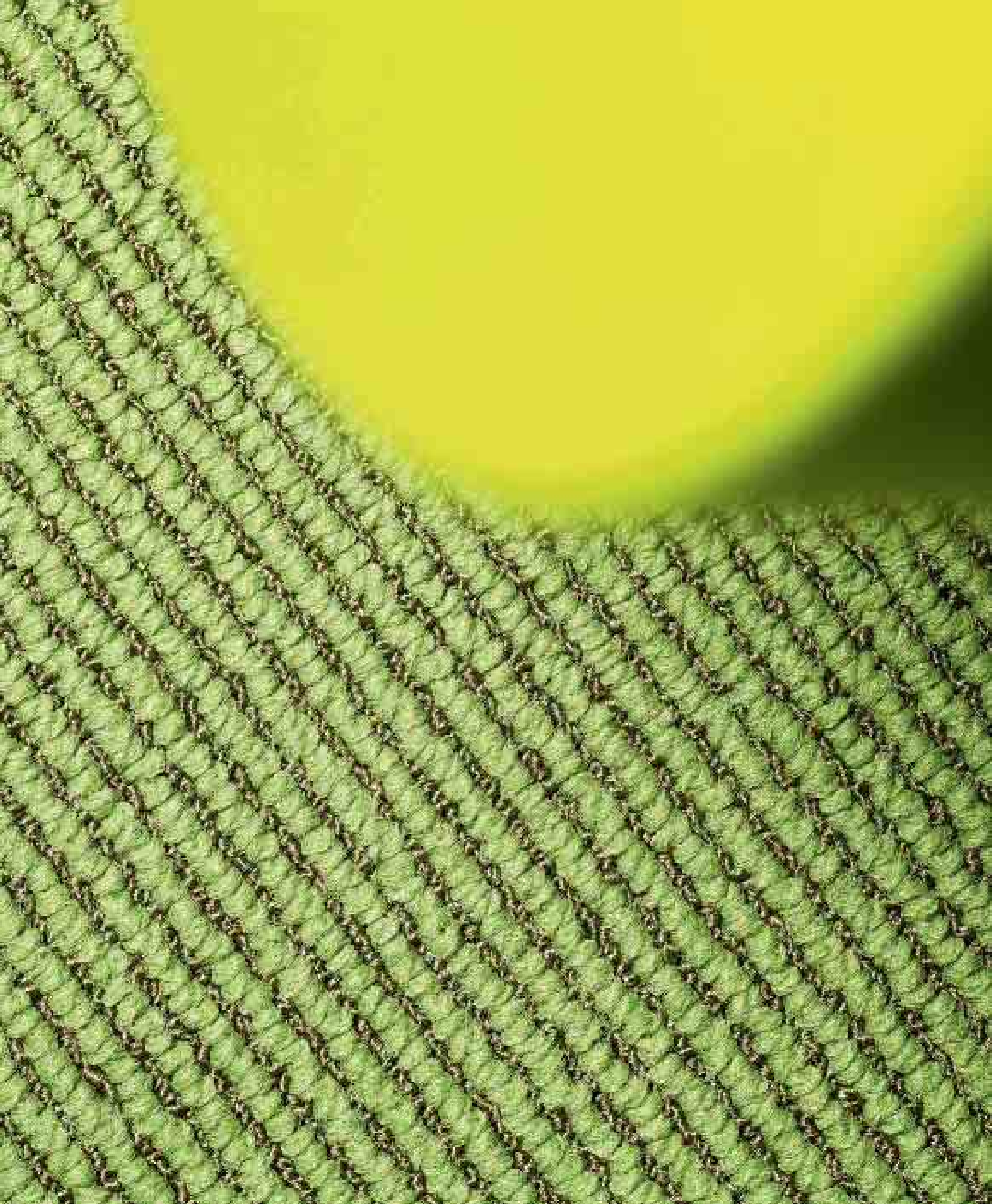


Strapazierwert 33 - stark (extrem) | **Komfortwert** LC2 gut | **Herstellungsart** getuftet | **Verwendungsbereich** Stuhlrolle, Treppe | **Material der Nutzschrift** 100 % PA | **Poleinsatzgewicht** ca. 750 g/m² | **Brandverhalten** Cfl-s1
Wear criteria 33 - heavy (extreme) | **Comfort criteria** LC2 good | **Method of Production** tufted | **Application** Chair castor, stairs | **Pile material** 100 % PA | **Pile weight** approx. 750 g/m² | **Fire behaviour** Cfl-s1

Alle TOUCAN-T Qualitäten erfüllen die Anforderungen für LEED und DGNB zertifizierte Gebäude.
All TOUCAN-T products fulfill the requirements for LEED and DGNB certified buildings.

LOOP | **Channel**







Strapazierwert 33 - stark (extrem) | **Komfortwert** LC2 gut | **Herstellungsart** getuftet | **Verwendungsbereich** Stuhlrolle | **Material der Nutzschicht** 100 % PA Alto® | **Poleinsatzgewicht** ca. 800 g/m² | **Brandverhalten** Cfl-s1
Wear criteria 33 - heavy (extreme) | **Comfort criteria** LC2 good | **Method of Production** tufted | **Application** Chair castor | **Pile material** 100 % PA Alto® | **Pile weight** approx. 800 g/m² | **Fire behaviour** Cfl-s1

Alle TOUCAN-T Qualitäten erfüllen die Anforderungen für LEED und DGNB zertifizierte Gebäude.
All TOUCAN-T products fulfill the requirements for LEED and DGNB certified buildings.



7617



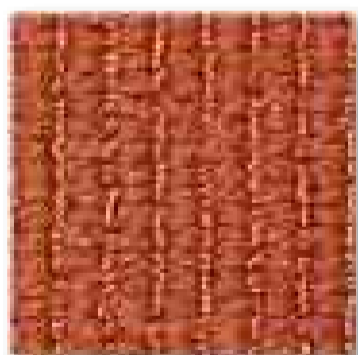
7614



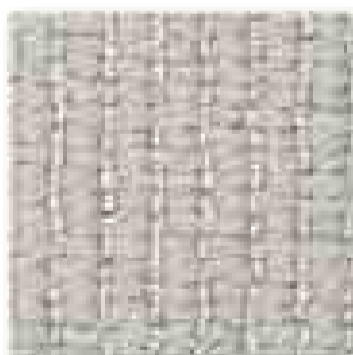
7600



7607



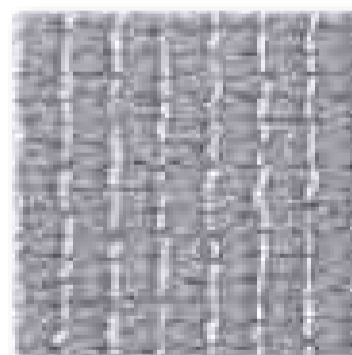
7616



7601



7613



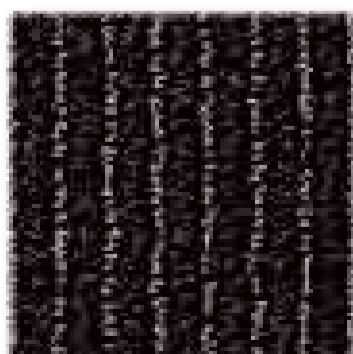
7609



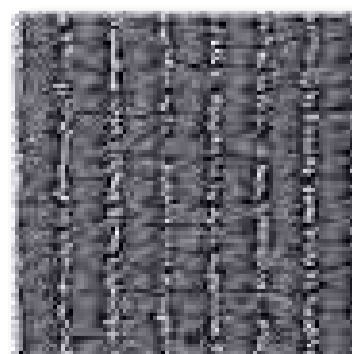
7608



7615



7603



7611



7612

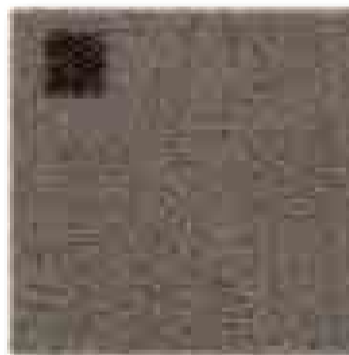




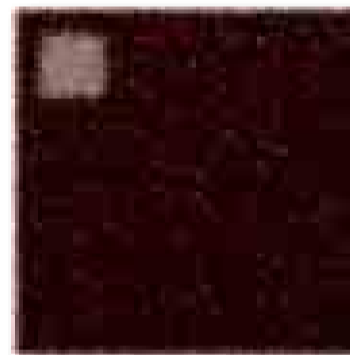


Strapazierwert 33 - stark (extrem) | **Komfortwert** LC2 gut | **Herstellungsart** getuftet | **Verwendungsbereich** Stuhlrolle, Treppe | **Material der Nutzschicht** 100 % PA | **Poleinsatzgewicht** ca. 750 g/m² | **Brandverhalten** Cfl-s1
Wear criteria 33 - heavy (extreme) | **Comfort criteria** LC2 good | **Method of Production** tufted | **Application** Chair castor, stairs | **Pile material** 100 % PA | **Pile weight** approx. 750 g/m² | **Fire behaviour** Cfl-s1

Alle TOUCAN-T Qualitäten erfüllen die Anforderungen für LEED und DGNB zertifizierte Gebäude.
All TOUCAN-T products fulfill the requirements for LEED and DGNB certified buildings.



6231



6230



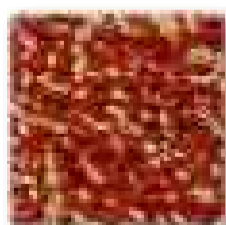
6232





Strapazierwert 33 - stark (extrem) | **Komfortwert** LC2 gut | **Herstellungsart** getuftet | **Verwendungsbereich** Stuhlrolle, Treppe | **Material der Nutzschicht** 100 % PA Econyl® | **Poleinsatzgewicht** ca. 700 g/m² | **Brandverhalten** Cfl-s1
Wear criteria 33 - heavy (extreme) | **Comfort criteria** LC2 good | **Method of Production** tufted | **Application** Chair castor, stairs | **Pile material** 100 % PA Econyl® | **Pile weight** approx. 700 g/m² | **Fire behaviour** Cfl-s1

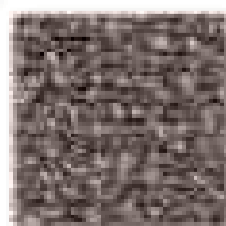
Alle TOUCAN-T Qualitäten erfüllen die Anforderungen für LEED und DGNB zertifizierte Gebäude.
 All TOUCAN-T products fulfill the requirements for LEED and DGNB certified buildings.



7960



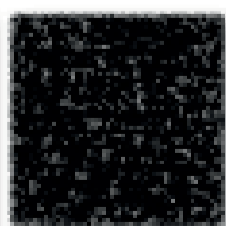
7959



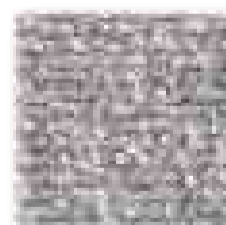
7958



7957



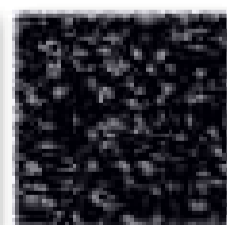
7955



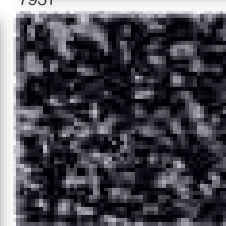
7951



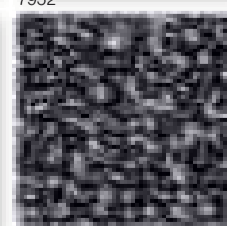
7952



7954



7956



7953



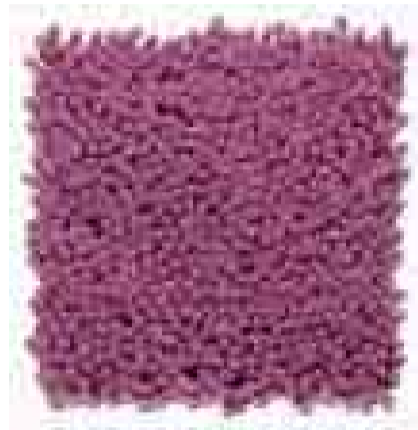
7950







6958



6959



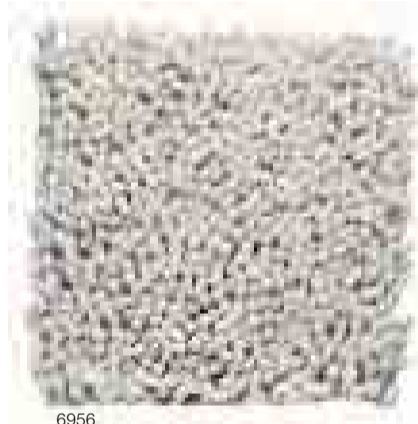
6960



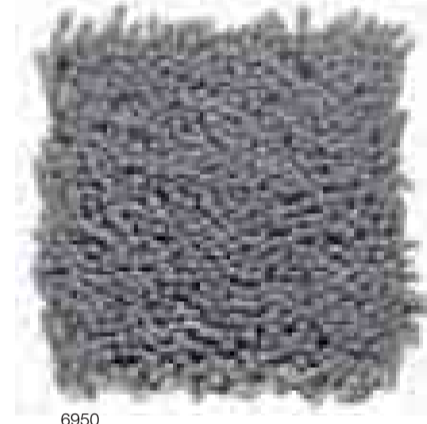
6961



6957



6956



6955



6962



6954



6951



6963



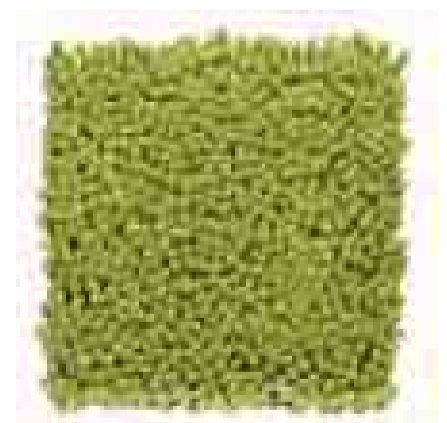
6953



6952



6952



6964



Strapazierwert 32 - normal (intensiv) | **Komfortwert** LC5 prestige | **Herstellungsart** getuftet | **Verwendungsbereich** Stuhlrolle | **Material der Nutzschicht** 100 % PA Alto® | **Poleinsatzgewicht** ca. 1.830 g/m² | **Brandverhalten** Cfl-s1
Wear criteria 32 - normal (intensive) | **Comfort criteria** LC5 prestige | **Method of Production** tufted | **Application** Chair castor | **Pile material** 100 % PA Alto® | **Pile weight** approx. 1.830 g/m² | **Fire behaviour** Cfl-s1

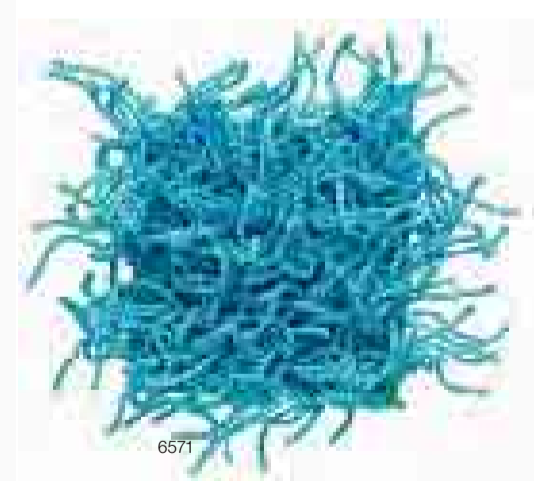
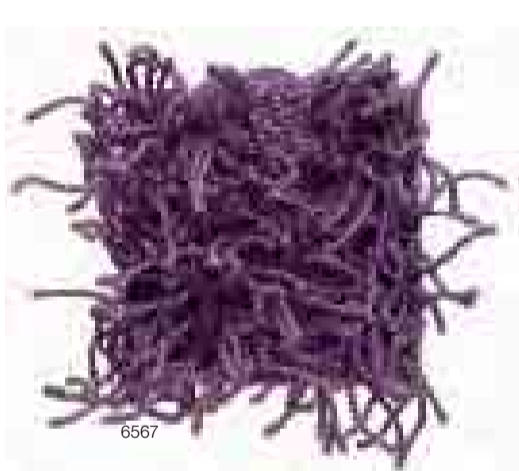
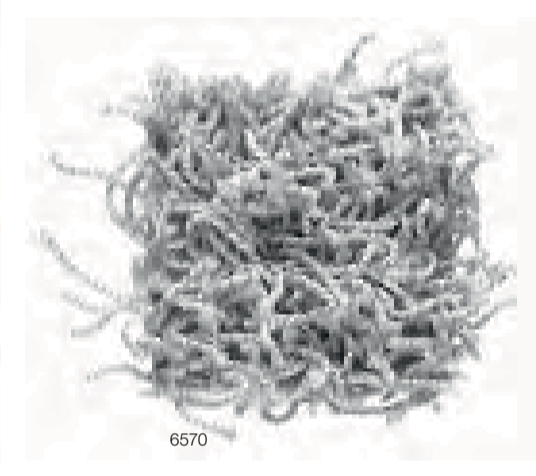
Alle TOUCAN-T Qualitäten erfüllen die Anforderungen für LEED und DGNB zertifizierte Gebäude.
 All TOUCAN-T products fulfill the requirements for LEED and DGNB certified buildings.











Strapazierwert 33 - stark (extrem) | **Komfortwert** LC4 luxuriös | **Herstellungsart** getuftet | **Verwendungsbereich** Stuhlrolle, Treppe | **Material der Nutzschicht** 100 % PA | **Poleinsatzgewicht** ca. 900 g/m² | **Brandverhalten** Cfl-s1
Wear criteria 33 - heavy (extreme) | **Comfort criteria** LC4 luxury | **Method of Production** tufted | **Application** Chair castor, stairs | **Pile material** 100 % PA | **Pile weight** approx. 900 g/m² | **Fire behaviour** Cfl-s1

Alle TOUCAN-T Qualitäten erfüllen die Anforderungen für LEED und DGNB zertifizierte Gebäude.
All TOUCAN-T products fulfill the requirements for LEED and DGNB certified buildings.

OUT | **Felt**



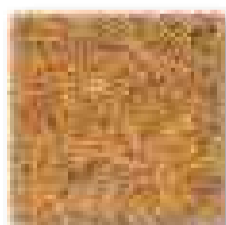


CUT | Felt



Strapazierwert 33 - stark (extrem) | **Komfortwert** LC1 einfach | **Herstellungsart** genadelt | **Verwendungsbereich** Stuhlrolle, Treppe | **Material der Nutzschicht** 35% PA, 40% PP, 25% PES | **Poleinsatzgewicht** ca. 550g/m² | **Brandverhalten** Cfl-s1
Wear criteria 33 - heavy (extreme) | **Comfort criteria** LC1 standard | **Method of Production** needled | **Application** Chair castor, stairs | **Pile material** 35% PA, 40% PP, 25% PES | **Pile weight** approx. 550 g/m² | **Fire behaviour** Cfl-s1

Alle TOUCAN-T Qualitäten erfüllen die Anforderungen für LEED und DGNB zertifizierte Gebäude.
All TOUCAN-T products fulfill the requirements for LEED and DGNB certified buildings.



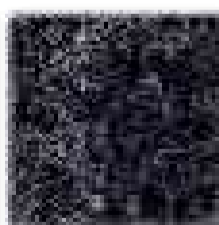
6008



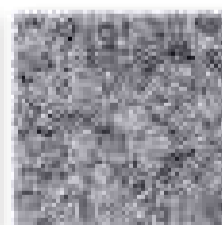
6007



6004



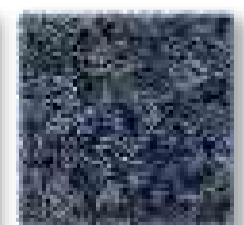
6002



6000



6013



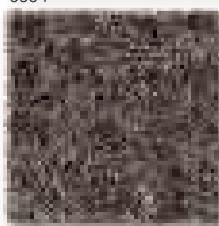
6010



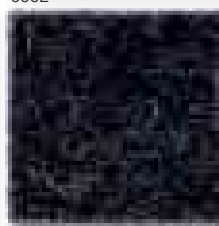
6009



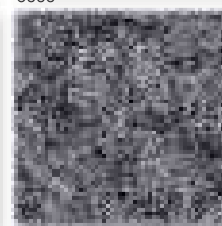
6006



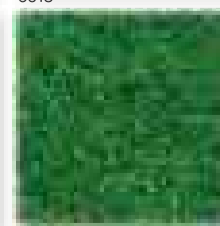
6005



6003



6001



6012



6011

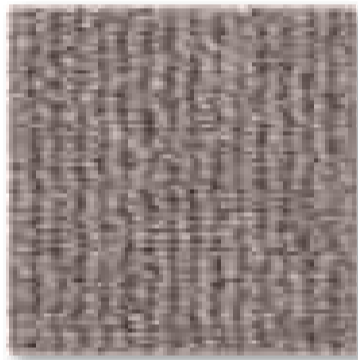




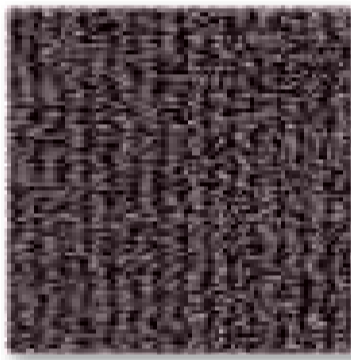




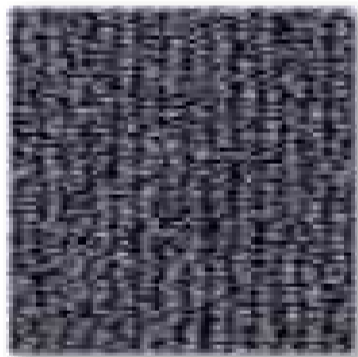
7308



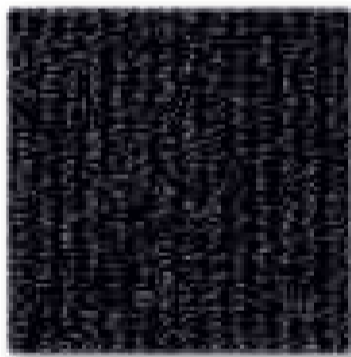
7309



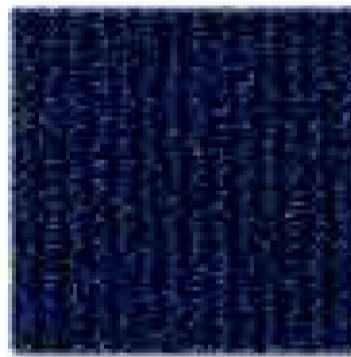
7310



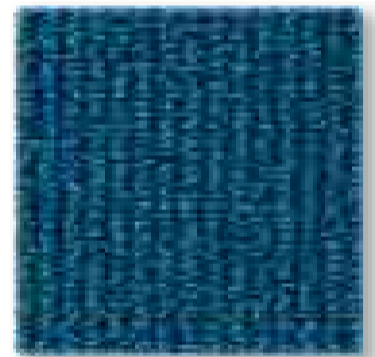
7305



7306



7300



7307



Strapazierwert 33 - stark (extrem) | **Komfortwert** LC2 gut | **Herstellungsart** getuftet | **Verwendungsbereich** Stuhlrolle, Treppe | **Material der Nutzschicht** 100 % PA Alto® | **Poleinsatzgewicht** ca. 780 g/m² | **Brandverhalten** Cfl-s1
Wear criteria 33 - heavy (extreme) | **Comfort criteria** LC2 good | **Method of Production** tufted | **Application** Chair castor, stairs | **Pile material** 100 % PA Alto® | **Pile weight** approx. 780 g/m² | **Fire behaviour** Cfl-s1

Alle TOUCAN-T Qualitäten erfüllen die Anforderungen für LEED und DGNB zertifizierte Gebäude.
All TOUCAN-T products fulfill the requirements for LEED and DGNB certified buildings.

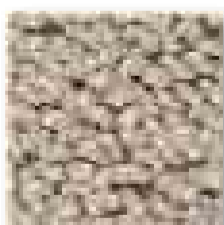




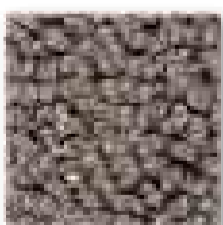


Strapazierwert 33 - stark (extrem) | **Komfortwert** LC3 hoch | **Herstellungsart** getuftet | **Verwendungsbereich** Stuhlrolle, Treppe | **Material der Nutzschicht** 100 % PA | **Poleinsatzgewicht** ca. 1.150 g/m² | **Brandverhalten** Cfl-s1
Wear criteria 33 - heavy (extreme) | **Comfort criteria** LC3 high | **Method of Production** tufted | **Application** Chair castor, stairs | **Pile material** 100 % PA | **Pile weight** approx. 1.150 g/m² | **Fire behaviour** Cfl-s1

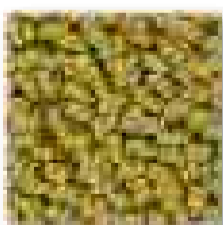
Alle TOUCAN-T Qualitäten erfüllen die Anforderungen für LEED und DGNB zertifizierte Gebäude.
 All TOUCAN-T products fulfill the requirements for LEED and DGNB certified buildings.



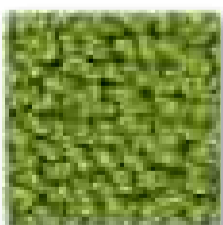
7704



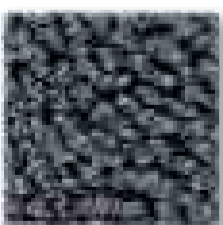
7705



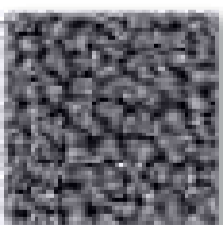
7719



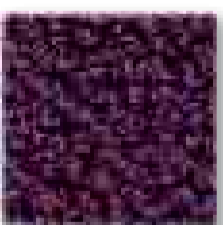
7708



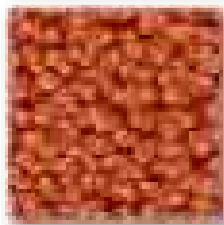
7718



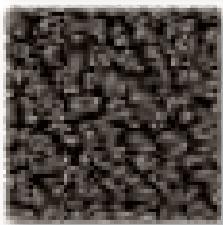
7701



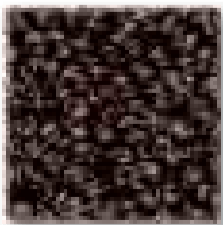
7711



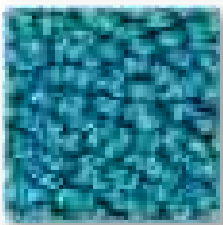
7714



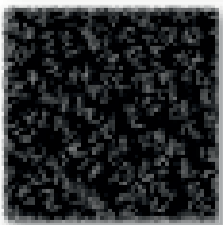
7706



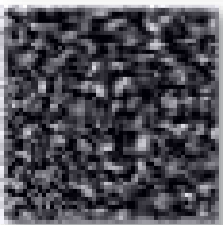
7715



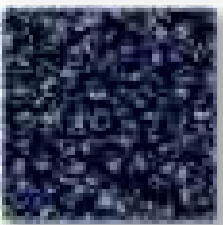
7716



7717



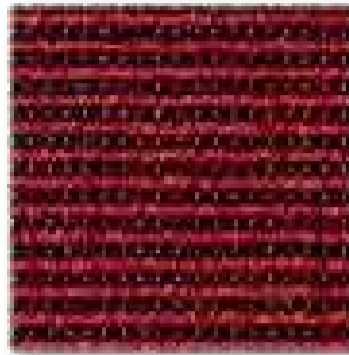
7700



7710



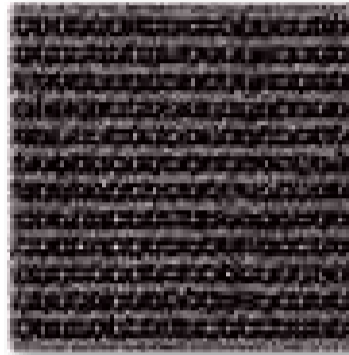




1001



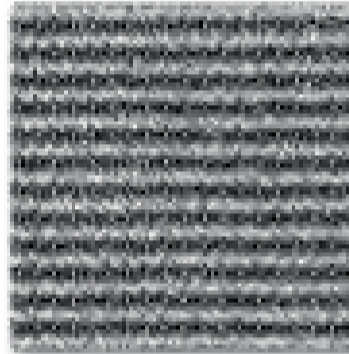
1004



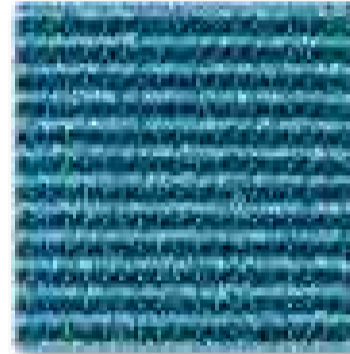
1003



1002



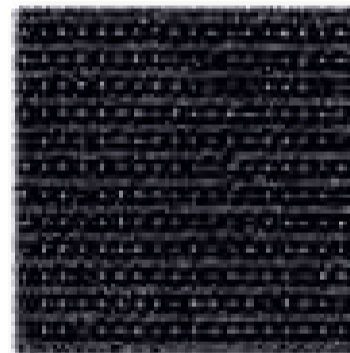
1008



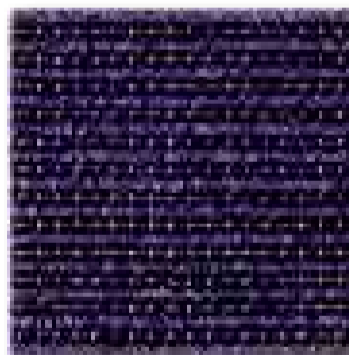
1005



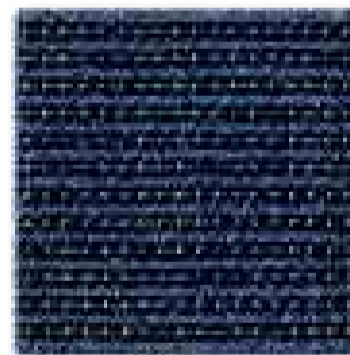
1007



1006



1010



1009



Strapazierwert 33 - stark (extrem) | **Komfortwert** LC1 einfach | **Herstellungsart** gewebt | **Verwendungsbereich** Stuhlrolle, Treppe | **Material der Nutzschicht** 100 % PA | **Poleinsatzgewicht** ca. 750 g/m² | **Brandverhalten** Cfl-s1
Wear criteria 33 - heavy (extreme) | **Comfort criteria** LC1 standard | **Method of Production** woven | **Application** Chair castor, stairs | **Pile material** 100 % PA | **Pile weight** approx. 750 g/m² | **Fire behaviour** Cfl-s1

Alle TOUCAN-T Qualitäten erfüllen die Anforderungen für LEED und DGNB zertifizierte Gebäude.
All TOUCAN-T products fulfill the requirements for LEED and DGNB certified buildings.

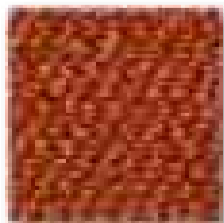




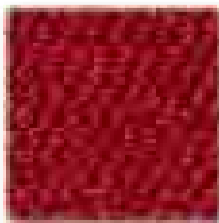


Strapazierwert 33 - stark (extrem) | **Komfortwert** LC2 gut | **Herstellungsart** getuftet | **Verwendungsbereich** Stuhlrolle, Treppe | **Material der Nutzschicht** 100 % PA Alto® | **Poleinsatzgewicht** ca. 780 g/m² | **Brandverhalten** Cfl-s1
Wear criteria 33 - heavy (extreme) | **Comfort criteria** LC2 good | **Method of Production** tufted | **Application** Chair castor, stairs | **Pile material** 100 % PA Alto® | **Pile weight** approx. 780 g/m² | **Fire behaviour** Cfl-s1

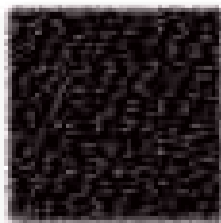
Alle TOUCAN-T Qualitäten erfüllen die Anforderungen für LEED und DGNB zertifizierte Gebäude.
 All TOUCAN-T products fulfill the requirements for LEED and DGNB certified buildings.



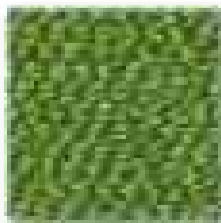
7215



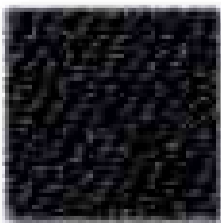
7216



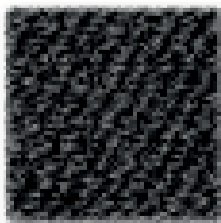
7206



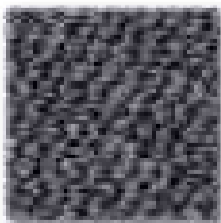
7213



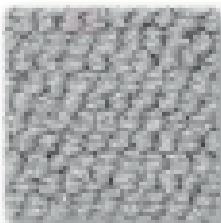
7211



7209



7208



7207

O P E N

S P A C E

F O R

N E W

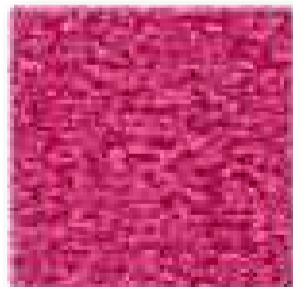
C O N C E P T S





Strapazierwert 33 - stark (extrem) | **Komfortwert** LC1 einfach | **Herstellungsart** getuftet | **Verwendungsbereich** Stuhlrolle, Treppe | **Material der Nutzschicht** 100 % PA Alto® | **Poleinsatzgewicht** ca. 680 g/m² | **Brandverhalten** Cfl-s1
Wear criteria 33 - heavy (extreme) | **Comfort criteria** LC1 standard | **Method of Production** tufted | **Application** Chair castor, stairs | **Pile material** 100 % PA Alto® | **Pile weight** approx. 680 g/m² | **Fire behaviour** Cfl-s1

Alle TOUCAN-T Qualitäten erfüllen die Anforderungen für LEED und DGNB zertifizierte Gebäude.
 All TOUCAN-T products fulfill the requirements for LEED and DGNB certified buildings.



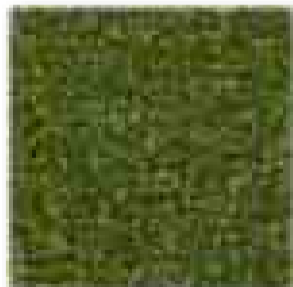
6116



6114



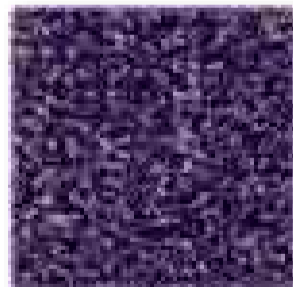
6109



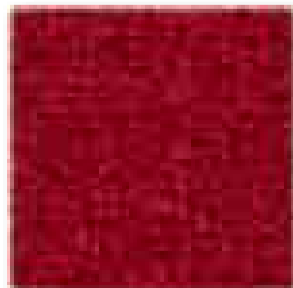
6118



6103



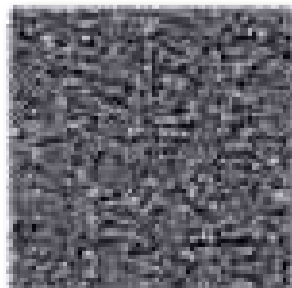
6117



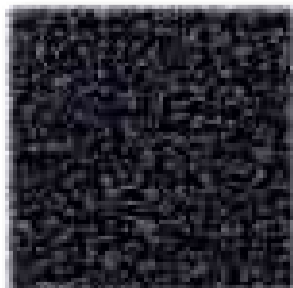
6115



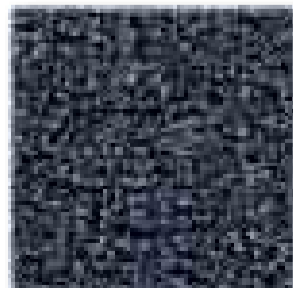
6107



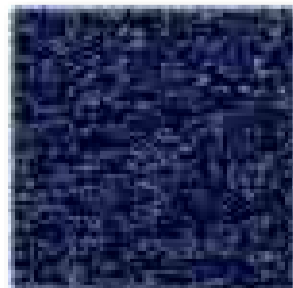
6111



6112



6113



6102

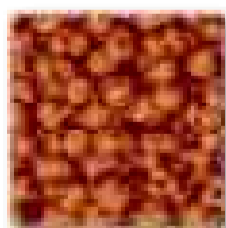




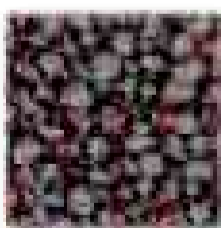


Strapazierwert 33 - stark (extrem) | **Komfortwert** LC3 hoch | **Herstellungsart** getuftet | **Verwendungsbereich** Stuhlrolle, Treppe | **Material der Nutzschicht** 100 % PA Antron® | **Poleinsatzgewicht** ca. 930 g/m² | **Brandverhalten** Cfl-s1
Wear criteria 33 - heavy (extreme) | **Comfort criteria** LC3 high | **Method of Production** tufted | **Application** Chair castor, stairs | **Pile material** 100 % PA Antron® | **Pile weight** approx. 930 g/m² | **Fire behaviour** Cfl-s1

Alle TOUCAN-T Qualitäten erfüllen die Anforderungen für LEED und DGNB zertifizierte Gebäude.
All TOUCAN-T products fulfill the requirements for LEED and DGNB certified buildings.



7363



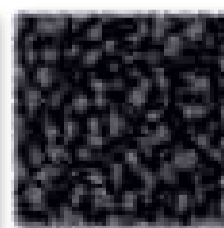
7360



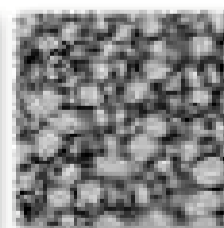
7362



7358



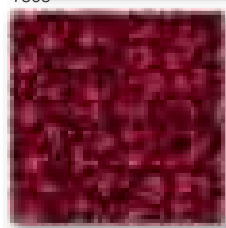
7354



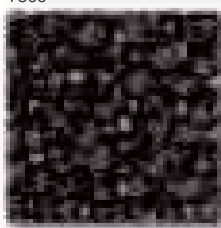
7352



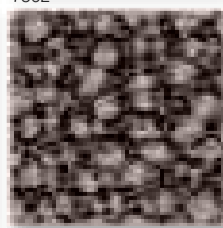
7350



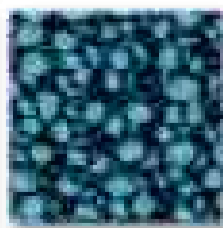
7364



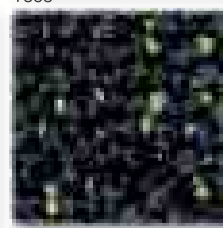
7359



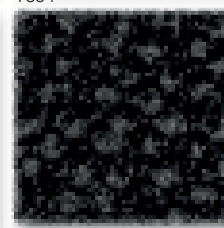
7361



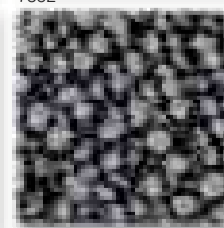
7356



7357



7355



7353



7351

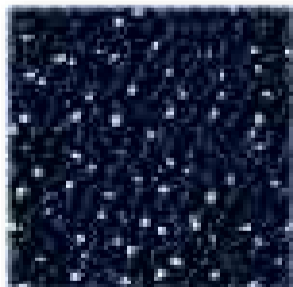




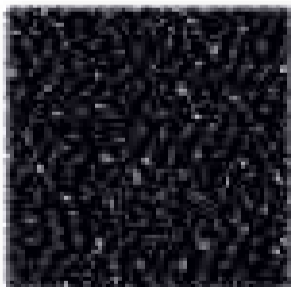


Strapazierwert extrem (extrem) | **Komfortwert** LC2 gut | **Herstellungsart** getuftet | **Verwendungsbereich** Stuhlrolle, Treppe | **Material der Nutzschicht** 100 % PA Alto® | **Poleinsatzgewicht** ca. 780 g/m² | **Brandverhalten** Cfl-s1
Wear criteria extreme (extreme) | **Comfort criteria** LC2 good | **Method of Production** tufted | **Application** Chair castor, stairs | **Pile material** 100 % PA Alto® | **Pile weight** approx. 780 g/m² | **Fire behaviour** Cfl-s1

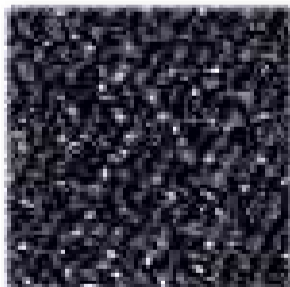
Alle TOUCAN-T Qualitäten erfüllen die Anforderungen für LEED und DGNB zertifizierte Gebäude.
 All TOUCAN-T products fulfill the requirements for LEED and DGNB certified buildings.



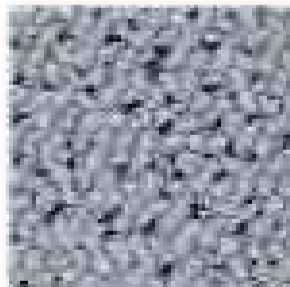
7421



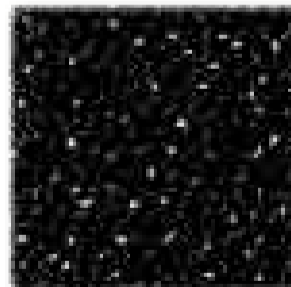
7428



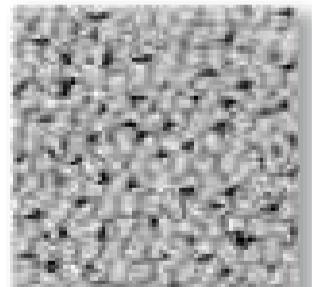
7424



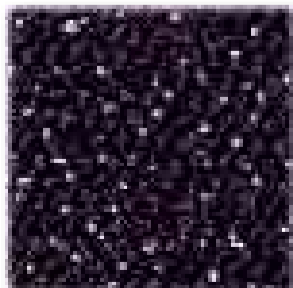
7427



7422



7430



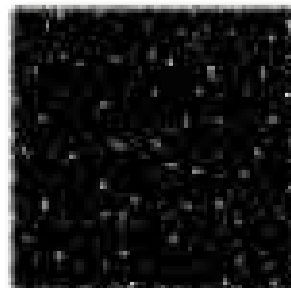
7426



7425



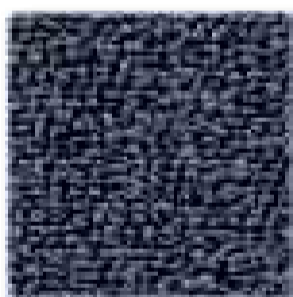
7423



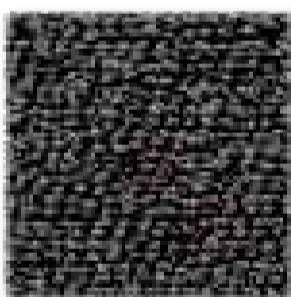
7429



7420



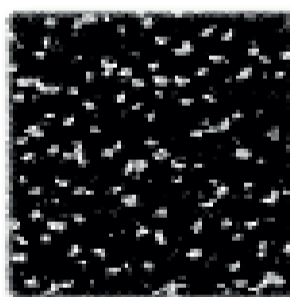
ECO Concept 1204



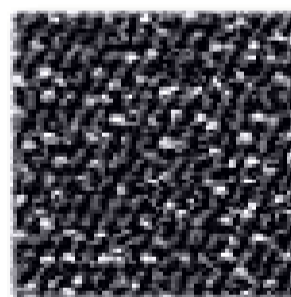
ECO Concept 1203



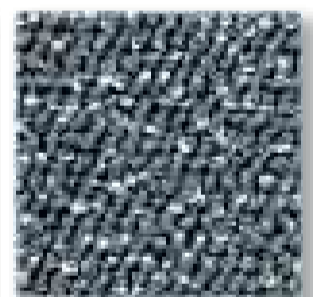
ECO Concept 1202



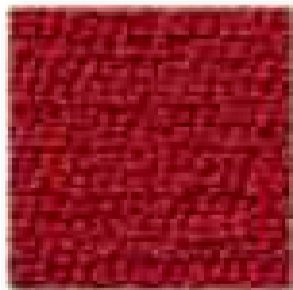
ECO Stream 1253



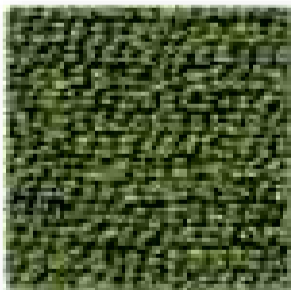
ECO Stream 1254



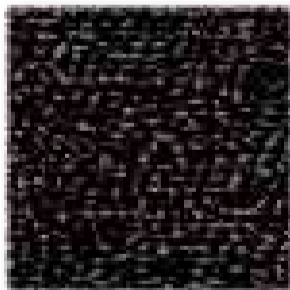
ECO Stream 1252



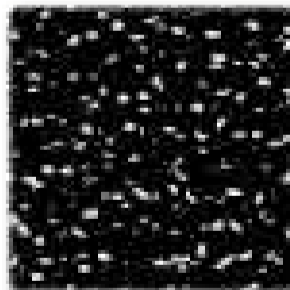
ECO Concept 1206 (ab 800m²)



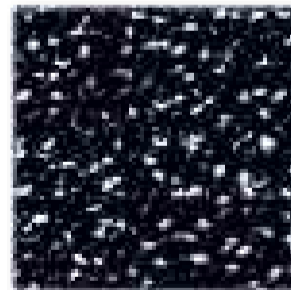
ECO Concept 1205 (ab 800m²)



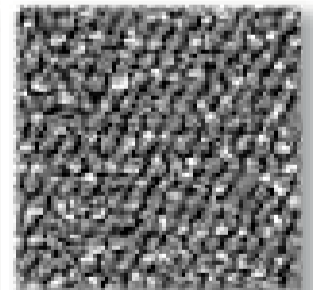
ECO Concept 1201



ECO Stream 1251



ECO Stream 1255 (ab 800m²)



ECO Stream 1256 (ab 800m²)



ECOLOGICS

Objekt-Teppichboden aus Recyceltem Polyamid

Umweltgerechtes, ökonomisches und sozial verantwortungsvolles Handeln gehört seit über 25 Jahren zu den Unternehmensgrundsätzen der TOUCAN-T Carpet Manufacture.

Dem Gedanken der Nachhaltigkeit folgend haben wir die Kollektion ECOLOGICS entwickelt - Objekt Teppichboden mit hohem Recyclinganteil.

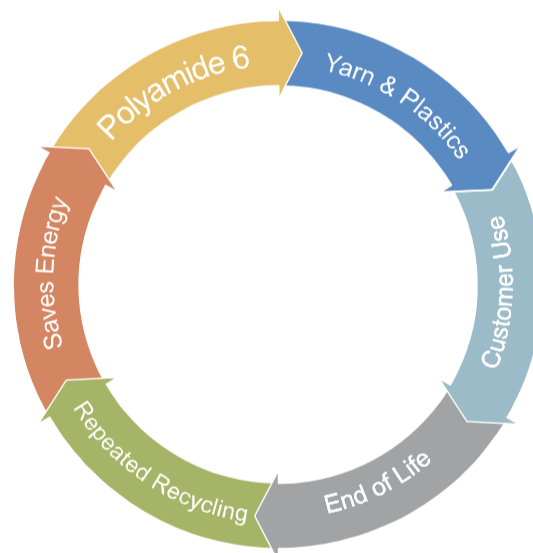
Basis der neuen Produkte der ECOLOGICS Kollektion ist das Garn ECONYL by Aquafil. ECONYL wird aus wiederverwertetem „post consumer“ und „post industrial“ Polyamid-Wertstoff produziert. Aus 11 kg recyceltem Polyamid werden 10kg ECONYL gewonnen.

Commercial carpet made of recycled polyamide

For more than 25 years now environmentally friendly, economic and socially responsible behavior has been one of the basic principles of TOUCAN-T Carpet Manufacture.

Following the idea of sustainability we have developed the ECOLOGICS collection – office carpet with a high recycling content.

A yarn called ECONYL by Aquafil forms the basis of all new products of our ECOLOGICS collection. ECONYL is made of recycled “post consumer” and “post industrial” polyamide. 10kg ECONYL can be recovered out of 11 kg recycled polyamide.



- **15% Reduzierung des Wasserbedarfs** / 15% less water demand
- **80% Vermeidung organischen Abfalls** / 80% less organic waste
- **85% Reduzierung von Treibhausgasen** / 85% less greenhouse gases
- **Minderung des Rohölbedarfs um 1 t pro t Polyamid**
/ Reduction in crude oil demand of 1t per t polyamide
- **Reduzierung des CO² Ausstoßes um 2t pro t polyamid**
/ Reduction in CO² output by 2t per t polyamide



Bitte besuchen Sie unsere Web-Seite für weitere Informationen
Please visit our webpage for further information



T-SONIC für eine bessere Raumakustik

Moderne Büroarbeitsplätze sollen die Arbeit optimal unterstützen und für die Mitarbeiter ein positives Ambiente bereitstellen, Mitarbeitermotivation und –konzentrationsfähigkeit fördern. Flexible Bürostrukturen mit kommunikativen Raumkonzepten erfüllen diese Anforderungen am besten.

Die zunehmenden Flexibilitätsanforderungen an die Raum- und Arbeitsplatzgestaltung, die größere Arbeitsdynamik und die permanent wechselnden Rahmenbedingungen an die Arbeitsprozesse lassen eine arbeitsplatzbezogene raumakustische Gestaltung oftmals schwierig erscheinen.

Mit einer raumweiten, sozusagen globalen Schallabsorption wird demzufolge ein wichtiger Schritt in Richtung geeigneter Raumakustik getan. In den meisten Büroräumen – vor allem bei der Nutzung moderner bauteilaktivierter Decken – ist der Fußboden die größte zusammenhängende und verbleibende Fläche für akustische Maßnahmen.

Lärm und visuelle Unruhe belasten die Konzentrationsfähigkeit, eine Studie des VDI schätzt die Leistungseinbußen durch diese Faktoren auf 20 bis 30 Prozent.*

Mit T-SONIC lassen sich diese Leistungseinbußen reduzieren.

new sound of silence

T-SONIC for better room acoustics

Modern office workplaces should support work optimally and provide a positive ambiance to the employees, furthermore, they should encourage staff motivation and the power of concentration. Flexible office structures combined with communicative room structures meet these demands best.

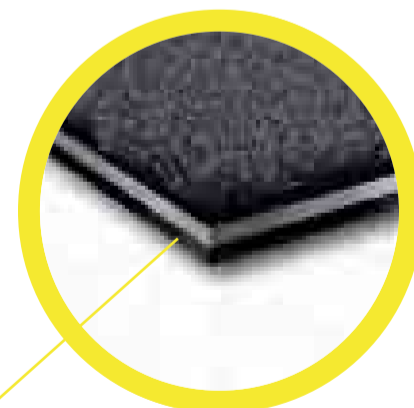
The increasing flexibility requirements concerning room and workplace design, higher working dynamics and permanently changing requirements of work processes make room acoustic design based on the workplace often challenging.

Therefore, a room-wide or global sound absorption is an important step towards qualified room acoustics. In most offices - particularly when modern sectional ceilings are used - the floor is the largest contiguous surface for acoustic measures.

Noise and visual disturbances strain the power of concentration – a study of the VDI (Association of German Engineers) puts the losses of performance due to these factors at 20 – 30%.

These losses of performance can be reduced by T-SONIC.

bis
zu **50%**
verbesserte
Schallabsorption
*up to 50% improved
sound absorption*
 α_w bis zu **0,35**



Die spezielle T-SONIC Beschichtung macht den Unterschied!
The gorgeous T-SONIC backing makes the difference!



TOUCAN-T ist Mitglied der Deutschen Gesellschaft für Nachhaltiges Bauen e.V., die das Ziel hat, nachhaltiges und wirtschaftlich effizientes Bauen zu fördern.

TOUCAN-T is a member of the German association of sustainable building, which encourages sustainable and economically efficient building.



Alle TOUCAN-T Produkte erfüllen die CE Standards gemäß Bauproduktrichtlinie (CPD) bezüglich Brandverhalten, Gleitwiderstand, frei von Formaldehyd, antistatische Ausrüstung und Wärmeleitfähigkeit.

All products by TOUCAN-T meet the requirements under the CE standards pursuant to the Construction Products Directive (CPD) with respect to their reaction to fire, sliding resistance, levels of formaldehyde, antistatic equipment and thermal conductivity.



Die Einhaltung niedrigster Emissionsgrenzen wird zusätzlich regelmäßig durch den TÜV Hessen zertifiziert. Damit werden zugleich die Anforderungen der Prüfsiegel „Blauer Engel“ und „Green Label Plus“ erfüllt.

Compliance with the lowest possible levels of emission is regularly certified by the Technical Inspection Authority (TÜV Hessen). This means that we also fulfill the requirements for the “Blauer Engel” (Blue Angel) and “Green Label Plus” seals of approval.





Alle TOUCAN-T Produkte verfügen über die allgemeine bauaufsichtliche Zulassung (abZ) gem. DIBt-AgBB Schema.

National technical approval (allgemeine bauaufsichtliche Zulassung – abZ) under the DIBt-AgBB scheme was given for all products by TOUCAN-T.



PRODIS: das einheitliche europäische Produktinformations-System für textile Bodenbeläge. Es ist das erste umfassende Verbraucherinformationssystem, das Informationen zu Umweltproblemen, Verbrauchergesundheit und Sicherheitsaspekten ebenso wie Informationen zu Einsatzbereichen und zusätzlichen Eigenschaften textiler Bodenbeläge zusammenfasst. Alle TOUCAN-T Produkte sind über Prodis zertifiziert.

PRODIS: the uniform product Information System of the European Carpet Industry. It is the first comprehensive consumer information system to pool information on issues regarding the environment, consumer health and security aspects as well as range of application and additional characteristics of floor coverings. All products by TOUCAN-T have been certified by PRODIS.



TOUCAN-T ist Vollmitglied in der Gemeinschaft umweltfreundlicher Teppichböden e.V. (GuT) deren Ziel es ist, geeignete Maßnahmen für die Schadstofffreiheit von Teppichböden während der Produktion zu gewährleisten und für ein unbelastetes Endprodukt zu sorgen. Zur Erreichung dieses Ziels lässt die GuT die Produktion und die Produkte durch neutrale Prüfinstitute testen.

TOUCAN-T is a regular member of the Association of Environmentally-Friendly Carpets which strives to ensure that the production process as well as the end product be free of hazardous substances. To achieve this goal, the Association of Environmentally-Friendly Carpets has the production process and the products tested by neutral testing laboratories.

TOUCAN-T

carpet manufacture

Locations

Cologne Oval Offices
O.A.S.E. Universität Düsseldorf
Mies van der Rohe Business Park

Impressum *Imprint*

Copyright
TOUCAN-T Carpet Manufacture GmbH, Krefeld
www.toucan-t.de

Konzeption und Design *Conception and design*
Daniel Lieser www.oquid.de

Fotografie *Photography*
zweimalig www.2malig.de

Styling
Annett Janowiak www.annettjanowiak.com

Teppichinstallation *Carpet fitting*
Wolfgang Sieven

Druck *Print*
Pomp GmbH www.pomp.de

Kollektionsentwicklung *collection development*

Farbkonzeption *Colour conception*
Stefanie Nellesen, Eveline Bettinger - TOUCAN-T

Techn. Entwicklung *Techn. development*
Heiko Kühnen, Oliver Loskant - TOUCAN-T

Koordination *Coordination*
Sigrid Girthen - TOUCAN-T

Bezugsquellen *source of supply*

www.designpostkoeln.de
www.moroso.it
www.arper.com
www.arco.nl
www.bulo.be
www.lammhults.se
www.radar-producte.ch
www.magis.it
www.magazin-bonn.de
www.isabel-hamm.de
www.eric-degenhardt.com
www.marceau-requisite.de

Farbabweichungen sind drucktechnisch bedingt.
Technische Änderungen vorbehalten.
Für inhaltliche Fehler kann keine Haftung übernommen werden.

Colour variation due to printing techniques.
Technical changes reserved.
We can not accept responsibility for content of this catalogue.